

Product datasheet for **TA374770S**

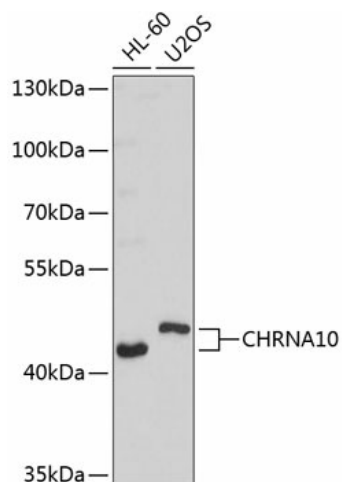
CHRNA10 Rabbit Polyclonal Antibody

Product data:

Product Type:	Primary Antibodies
Applications:	ELISA, WB
Recommended Dilution:	WB, 1:200 - 1:1000 ELISA, Recommended starting concentration is 1 µg/mL. Please optimize the concentration based on your specific assay requirements.
Reactivity:	Human
Modifications:	Unmodified
Host:	Rabbit
Isotype:	IgG
Clonality:	Polyclonal
Formulation:	Buffer: PBS with 0.02% sodium azide, 50% glycerol, pH 7.3.
Concentration:	lot specific
Purification:	Affinity purification
Conjugation:	Unconjugated
Storage:	Store at -20°C. Avoid freeze / thaw cycles.
Stability:	Shelf life: one year from despatch.
Predicted Protein Size:	50kDa
Gene Name:	cholinergic receptor nicotinic alpha 10 subunit
Database Link:	Entrez Gene 57053 Human Q9GZZ6
Background:	Predicted to enable acetylcholine-gated cation-selective channel activity. Acts upstream of or within positive regulation of cytosolic calcium ion concentration. Predicted to be located in membrane. Predicted to be active in cholinergic synapse and neuron projection. Predicted to be integral component of postsynaptic specialization membrane.
Synonyms:	NACHRA10



[View online »](#)

Product images:


Western blot analysis of various lysates using CHRNA10 Rabbit pAb ([TA374770]) at 1:1000 dilution.

Secondary antibody: HRP-conjugated Goat anti-Rabbit IgG (H+L) (AS014) at 1:10000 dilution.

Lysates/proteins: 25µg per lane.

Blocking buffer: 3% nonfat dry milk in TBST.

Detection: ECL Basic Kit (RM00020).

Exposure time: 20s.