

## Product datasheet for **TA374767**

### CHRM1 Rabbit Polyclonal Antibody

#### Product data:

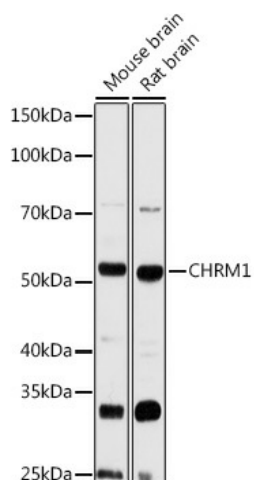
|                         |   |
|-------------------------|---|
| Product Type:           | Primary Antibodies                                      |
| Applications:           | ICC/IF, WB  |
| Recommended Dilution:   | WB,1:500 - 1:2000<br>IF,1:50 - 1:200                    |
| Reactivity:             | Human, Mouse, Rat                                       |
| Host:                   | Rabbit  |
| Isotype:                | IgG   |
| Clonality:              | Polyclonal  |
| Immunogen:              | A synthetic peptide of human CHRM1.                     |
| Formulation:            | Buffer: PBS with 0.02% sodium azide,50% glycerol,pH7.3. |
| Concentration:          | lot specific  |
| Purification:           | Affinity purification                                   |
| Conjugation:            | Unconjugated  |
| Storage:                | Store at -20°C. Avoid freeze / thaw cycles.             |
| Stability:              | Shelf life: one year from despatch.                     |
| Predicted Protein Size: | 50kDa/51kDa   |
| Gene Name:              | cholinergic receptor muscarinic 1                       |
| Database Link:          | <a href="#">Entrez Gene 1128 Human P11229</a>           |

**Background:** The muscarinic cholinergic receptors belong to a larger family of G protein-coupled receptors. The functional diversity of these receptors is defined by the binding of acetylcholine and includes cellular responses such as adenylate cyclase inhibition, phosphoinositide degeneration, and potassium channel mediation. Muscarinic receptors influence many effects of acetylcholine in the central and peripheral nervous system. The muscarinic cholinergic receptor 1 is involved in mediation of vagally-induced bronchoconstriction and in the acid secretion of the gastrointestinal tract. The gene encoding this receptor is localized to 11q13.

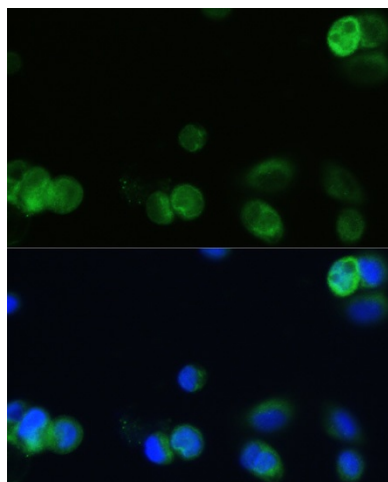
**Synonyms:** HM1; M1; M1R; MGC30125



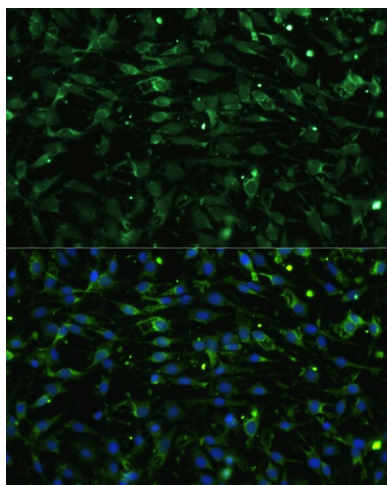
[View online »](#)

**Product images:**

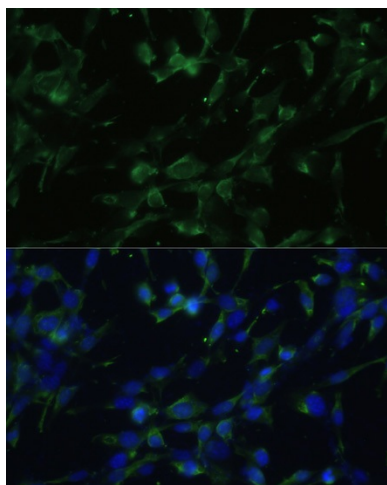
Western blot analysis of extracts of various cell lines, using CHRM1 antibody (TA374767) at 1:3000 dilution. | Secondary antibody: HRP Goat Anti-Rabbit IgG (H+L) at 1:10000 dilution. | Lysates/proteins: 25ug per lane. | Blocking buffer: 3% nonfat dry milk in TBST. | Detection: ECL Basic Kit . | Exposure time: 90s.



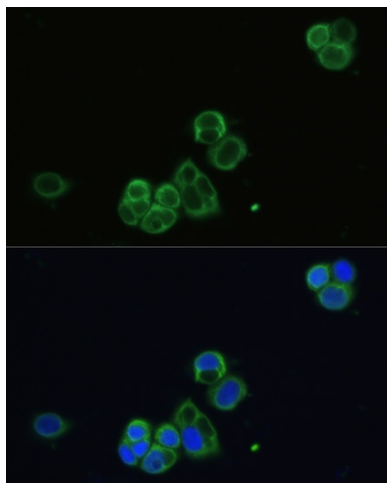
Immunofluorescence analysis of OVCAR-3 cells using CHRM1 antibody (TA374767) at dilution of 1:100. Blue: DAPI for nuclear staining.



Immunofluorescence analysis of C6 cells using CHRM1 antibody (TA374767) at dilution of 1:100. Blue: DAPI for nuclear staining.



Immunofluorescence analysis of NIH-3T3 cells using CHRM1 antibody (TA374767) at dilution of 1:100. Blue: DAPI for nuclear staining.



Immunofluorescence analysis of OVCAR-3 cells using CHRM1 antibody (TA374767) at dilution of 1:100. Blue: DAPI for nuclear staining.