

## Product datasheet for **TA374760S**

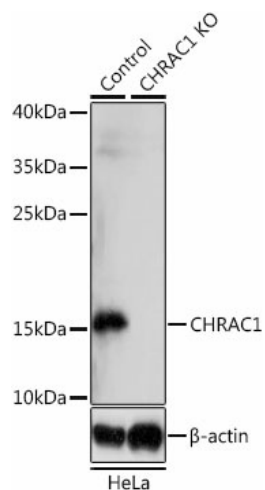
### CHRAC1 Rabbit Polyclonal Antibody

#### Product data:

Product Type:	Primary Antibodies
Applications:	ELISA, WB
Recommended Dilution:	WB, 1:500 - 1:2000 ELISA, Recommended starting concentration is 1 µg/mL. Please optimize the concentration based on your specific assay requirements.
Reactivity:	Human, Mouse, Rat
Modifications:	Unmodified
Host:	Rabbit
Isotype:	IgG
Clonality:	Polyclonal
Formulation:	Buffer: PBS with 0.02% sodium azide, 50% glycerol, pH 7.3.
Concentration:	lot specific
Purification:	Affinity purification
Conjugation:	Unconjugated
Storage:	Store at -20°C. Avoid freeze / thaw cycles.
Stability:	Shelf life: one year from despatch.
Predicted Protein Size:	15kDa
Gene Name:	chromatin accessibility complex 1
Database Link:	<a href="#">Entrez Gene 54108 Human</a> <a href="#">Q9NRG0</a>
Background:	CHRAC1 is a histone-fold protein that interacts with other histone-fold proteins to bind DNA in a sequence-independent manner. These histone-fold protein dimers combine within larger enzymatic complexes for DNA transcription, replication, and packaging.
Synonyms:	CHARC1; CHARC15; CHRAC-1; CHRAC-15; CHRAC15; HuCHRAC15; YCL1



[View online »](#)

**Product images:**


Western blot analysis of lysates from wild type (WT) and CHRAC1 knockout (KO) HeLa cells