

Product datasheet for **TA374759S**

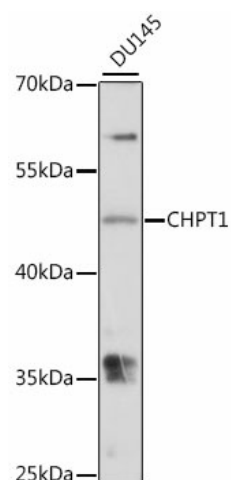
CHPT1 Rabbit Polyclonal Antibody

Product data:

Product Type:	Primary Antibodies
Applications:	ELISA, WB
Recommended Dilution:	WB, 1:500 - 1:2000 ELISA, Recommended starting concentration is 1 µg/mL. Please optimize the concentration based on your specific assay requirements.
Reactivity:	Human
Modifications:	Unmodified
Host:	Rabbit
Isotype:	IgG
Clonality:	Polyclonal
Formulation:	Buffer: PBS with 0.02% sodium azide, 50% glycerol, pH 7.3.
Concentration:	lot specific
Purification:	Affinity purification
Conjugation:	Unconjugated
Storage:	Store at -20°C. Avoid freeze / thaw cycles.
Stability:	Shelf life: one year from despatch.
Predicted Protein Size:	45kDa
Gene Name:	choline phosphotransferase 1
Database Link:	Entrez Gene 56994 Human Q8WUD6
Background:	Enables diacylglycerol cholinephosphotransferase activity. Involved in phosphatidylcholine biosynthetic process and platelet activating factor biosynthetic process. Predicted to be located in Golgi membrane. Predicted to be active in Golgi apparatus and endoplasmic reticulum membrane.
Synonyms:	CPT; CPT1; hCPT1


[View online »](#)

Product images:



Western blot analysis of lysates from DU145 cells