

Product datasheet for **TA374759**

CHPT1 Rabbit Polyclonal Antibody

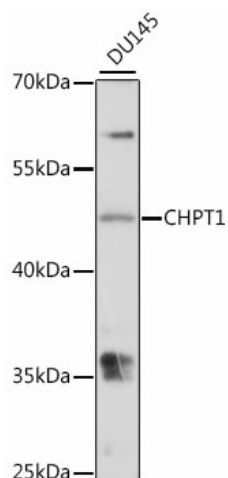
Product data:

Product Type:	Primary Antibodies
Applications:	WB
Recommended Dilution:	WB,1:500 - 1:2000
Reactivity:	Human
Modifications:	Unmodified
Host:	Rabbit
Isotype:	IgG
Clonality:	Polyclonal
Immunogen:	A synthetic peptide corresponding to a sequence within amino acids 1-100 of human CHPT1 (NP_064629.2).
Formulation:	Buffer: PBS with 0.02% sodium azide,50% glycerol,pH7.3.
Concentration:	lot specific
Purification:	Affinity purification
Conjugation:	Unconjugated
Storage:	Store at -20°C. Avoid freeze / thaw cycles.
Stability:	Shelf life: one year from despatch.
Predicted Protein Size:	24kDa/45kDa
Gene Name:	choline phosphotransferase 1
Database Link:	Entrez Gene 56994 Human Q8WUD6
Background:	Catalyzes phosphatidylcholine biosynthesis from CDP-choline. It thereby plays a central role in the formation and maintenance of vesicular membranes.
Synonyms:	CPT; CPT1; hCPT1



[View online »](#)

Product images:



Western blot analysis of extracts of DU145 cells, using CHPT1 antibody (TA374759) at 1:1000 dilution. | Secondary antibody: HRP Goat Anti-Rabbit IgG (H+L) at 1:10000 dilution. | Lysates/proteins: 25ug per lane. | Blocking buffer: 3% nonfat dry milk in TBST. | Detection: ECL Basic Kit . | Exposure time: 30s.