

## Product datasheet for **TA374758**

### Calcium binding protein P22 (CHP1) Rabbit Polyclonal Antibody

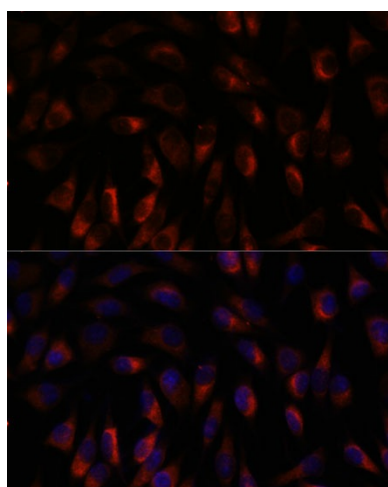
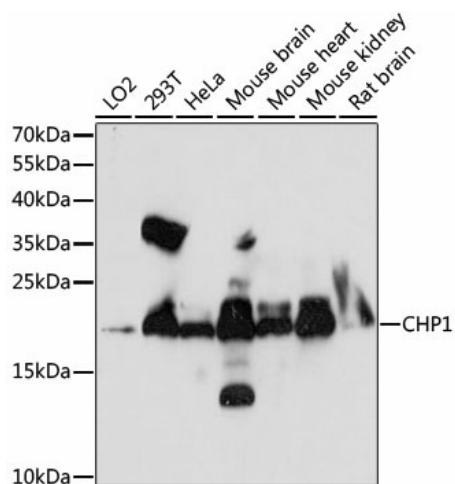
#### Product data:

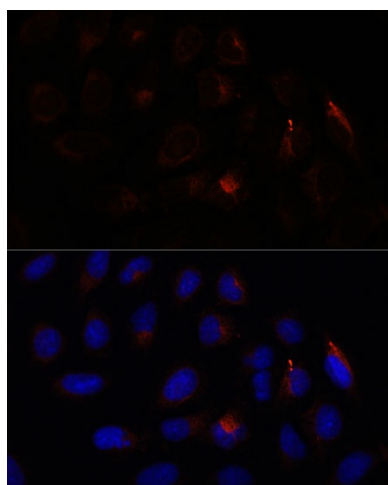
Product Type:	Primary Antibodies
Applications:	ICC/IF, WB
Recommended Dilution:	WB,1:500 - 1:2000 IF,1:50 - 1:200
Reactivity:	Human, Mouse, Rat
Modifications:	Unmodified
Host:	Rabbit
Isotype:	IgG
Clonality:	Polyclonal
Immunogen:	Recombinant fusion protein containing a sequence corresponding to amino acids 1-195 of human CHP1 (NP_009167.1).
Formulation:	Buffer: PBS with 0.02% sodium azide,50% glycerol,pH7.3.
Concentration:	lot specific
Purification:	Affinity purification
Conjugation:	Unconjugated
Storage:	Store at -20°C. Avoid freeze / thaw cycles.
Stability:	Shelf life: one year from despatch.
Predicted Protein Size:	22kDa
Gene Name:	calcineurin like EF-hand protein 1
Database Link:	<a href="#">Entrez Gene 11261 Human Q99653</a>
Background:	This gene encodes a phosphoprotein that binds to the Na <sup>+</sup> /H <sup>+</sup> exchanger NHE1. This protein serves as an essential cofactor which supports the physiological activity of NHE family members and may play a role in the mitogenic regulation of NHE1. The protein shares similarity with calcineurin B and calmodulin and it is also known to be an endogenous inhibitor of calcineurin activity.
Synonyms:	1500003O03Rik; AA960066; AI046351; Cahp; Chp; p24; RP23-22A15.1; Sid470p



[View online »](#)

**Product images:**





Immunofluorescence analysis of U-2 OS cells using CHP1 antibody (TA374758) at dilution of 1:100. Blue: DAPI for nuclear staining.