

Product datasheet for **TA374753S**

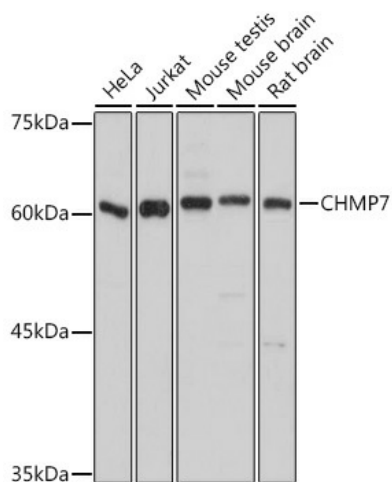
CHMP7 Rabbit Polyclonal Antibody

Product data:

Product Type:	Primary Antibodies
Applications:	ELISA, WB
Recommended Dilution:	WB, 1:500 - 1:2000 ELISA, Recommended starting concentration is 1 µg/mL. Please optimize the concentration based on your specific assay requirements.
Reactivity:	Human, Mouse, Rat
Modifications:	Unmodified
Host:	Rabbit
Isotype:	IgG
Clonality:	Polyclonal
Formulation:	Buffer: PBS with 0.02% sodium azide, 50% glycerol, pH 7.3.
Concentration:	lot specific
Purification:	Affinity purification
Conjugation:	Unconjugated
Storage:	Store at -20°C. Avoid freeze / thaw cycles.
Stability:	Shelf life: one year from despatch.
Predicted Protein Size:	51kDa
Gene Name:	charged multivesicular body protein 7
Database Link:	Entrez Gene 91782 Human Q8WUX9
Background:	Involved in several processes, including late endosome to vacuole transport; midbody abscission; and mitotic nuclear division. Located in cytosol; nuclear envelope; and nucleoplasm. Part of ESCRT III complex. Colocalizes with chromatin.
Synonyms:	MGC29816; OTTHUMP00000162592



[View online »](#)

Product images:


Western blot analysis of various lysates using CHMP7 Rabbit pAb (TA374753) at 1:1000 dilution.

Secondary antibody: HRP-conjugated Goat anti-Rabbit IgG (H+L) (AS014) at 1:10000 dilution.

Lysates/proteins: 25µg per lane.

Blocking buffer: 3% nonfat dry milk in TBST.

Detection: ECL Basic Kit (RM00020).

Exposure time: 10s.