

## Product datasheet for **TA374740S**

### CHID1 Rabbit Polyclonal Antibody

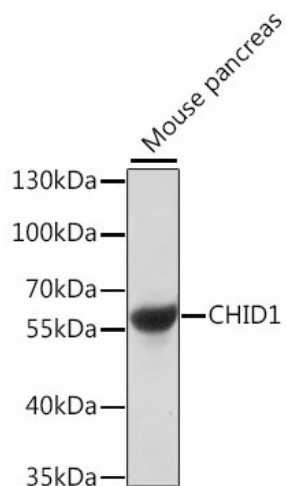
#### Product data:

Product Type:	Primary Antibodies
Applications:	ELISA, WB
Recommended Dilution:	WB, 1:500 - 1:2000 ELISA, Recommended starting concentration is 1 µg/mL. Please optimize the concentration based on your specific assay requirements.
Reactivity:	Mouse
Modifications:	Unmodified
Host:	Rabbit
Isotype:	IgG
Clonality:	Polyclonal
Formulation:	Buffer: PBS with 0.02% sodium azide, 50% glycerol, pH 7.3.
Concentration:	lot specific
Purification:	Affinity purification
Conjugation:	Unconjugated
Storage:	Store at -20°C. Avoid freeze / thaw cycles.
Stability:	Shelf life: one year from despatch.
Predicted Protein Size:	45kDa
Gene Name:	chitinase domain containing 1
Database Link:	<a href="#">Q9BWS9</a>
Background:	Enables oligosaccharide binding activity. Involved in negative regulation of cytokine production involved in inflammatory response. Located in several cellular components, including late endosome; lysosome; and trans-Golgi network.
Synonyms:	FLJ42707; GL008; MGC3234; SI-CLP



[View online »](#)

## Product images:



Western blot analysis of lysates from mouse pancreas