

## Product datasheet for **TA374735**

### CHI3L1 Rabbit Polyclonal Antibody

#### Product data:

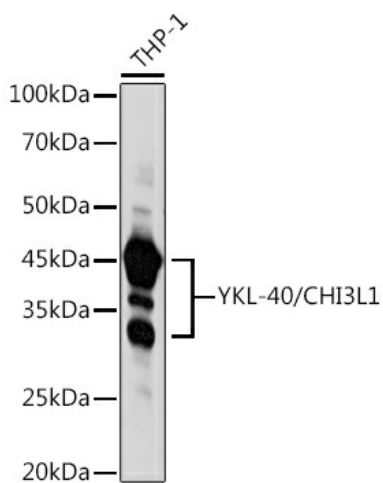
Product Type:	Primary Antibodies
Applications:	ICC/IF, IHC, WB
Recommended Dilution:	WB,1:500 - 1:2000 IHC,1:50 - 1:200 IF,1:50 - 1:200
Reactivity:	Human, Mouse, Rat
Modifications:	Unmodified
Host:	Rabbit
Isotype:	IgG
Clonality:	Polyclonal
Immunogen:	Recombinant fusion protein containing a sequence corresponding to amino acids 22-240 of human YKL-40/CHI3L1 (NP_001267.2).
Formulation:	Buffer: PBS with 0.02% sodium azide,50% glycerol,pH7.3.
Concentration:	lot specific
Purification:	Affinity purification
Conjugation:	Unconjugated
Storage:	Store at -20°C. Avoid freeze / thaw cycles.
Stability:	Shelf life: one year from despatch.
Predicted Protein Size:	42kDa
Gene Name:	chitinase 3 like 1
Database Link:	<a href="#">Entrez Gene 1116 Human P36222</a>
Background:	Chitinases catalyze the hydrolysis of chitin, which is an abundant glycopolymer found in insect exoskeletons and fungal cell walls. The glycoside hydrolase 18 family of chitinases includes eight human family members. This gene encodes a glycoprotein member of the glycosyl hydrolase 18 family. The protein lacks chitinase activity and is secreted by activated macrophages, chondrocytes, neutrophils and synovial cells. The protein is thought to play a role in the process of inflammation and tissue remodeling.



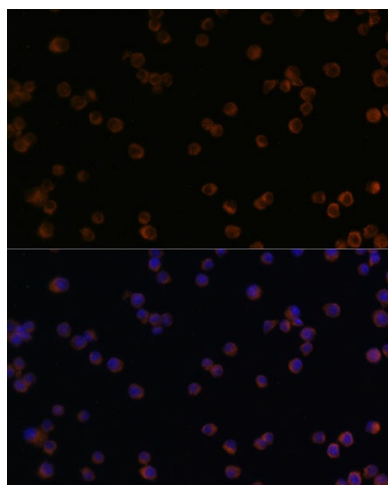
[View online »](#)

**Synonyms:** ASRT7; CGP-39; DKFZp686N19119; FLJ38139; GP-39; GP39; HC-gp39; HCGP-3P; hCGP-39; YKL-40; YKL40; YYL-40

**Product images:**



Western blot analysis of extracts of THP-1 cells, using YKL-40/CHI3L1 antibody (TA374735) at 1:1000 dilution. | Secondary antibody: HRP Goat Anti-Rabbit IgG (H+L) at 1:10000 dilution. | Lysates/proteins: 25ug per lane. | Blocking buffer: 3% nonfat dry milk in TBST. | Detection: ECL Basic Kit . | Exposure time: 30s.



Immunofluorescence analysis of Raw264.7 cells using YKL-40/CHI3L1 antibody (TA374735) at dilution of 1:100. Blue: DAPI for nuclear staining.