

## Product datasheet for **TA374731**

### CHFR Rabbit Polyclonal Antibody

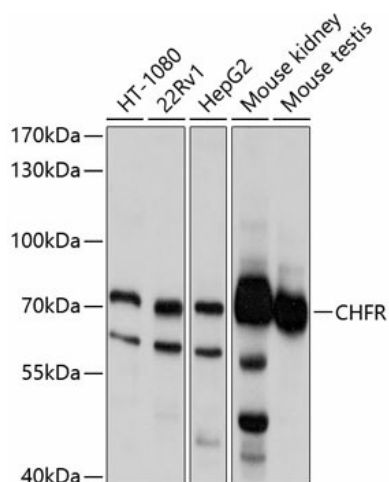
#### Product data:

Product Type:	Primary Antibodies
Applications:	WB
Recommended Dilution:	WB,1:500 - 1:2000
Reactivity:	Human, Mouse
Modifications:	Unmodified
Host:	Rabbit
Isotype:	IgG
Clonality:	Polyclonal
Immunogen:	Recombinant fusion protein containing a sequence corresponding to amino acids 1-290 of human CHFR (NP_001154818.1).
Formulation:	Buffer: PBS with 0.02% sodium azide,50% glycerol,pH7.3.
Concentration:	lot specific
Purification:	Affinity purification
Conjugation:	Unconjugated
Storage:	Store at -20°C. Avoid freeze / thaw cycles.
Stability:	Shelf life: one year from despatch.
Predicted Protein Size:	63kDa/69kDa/72kDa/73kDa
Gene Name:	checkpoint with forkhead and ring finger domains, E3 ubiquitin protein ligase
Database Link:	<a href="#">Entrez Gene 55743 Human Q96EP1</a>
Background:	This gene encodes an E3 ubiquitin-protein ligase required for the maintenance of the antephasis checkpoint that regulates cell cycle entry into mitosis and, therefore, may play a key role in cell cycle progression and tumorigenesis. The encoded protein has an N-terminal forkhead-associated domain, a central RING-finger domain, and a cysteine-rich C-terminal region. Alternatively spliced transcript variants that encode different protein isoforms have been described.
Synonyms:	FLJ10796; FLJ33629; RNF116; RNF196



[View online »](#)

## Product images:



Western blot analysis of extracts of various cell lines, using CHFR antibody (TA374731) at 1:1000 dilution. | Secondary antibody: HRP Goat Anti-Rabbit IgG (H+L) at 1:10000 dilution. | Lysates/proteins: 25ug per lane. | Blocking buffer: 3% nonfat dry milk in TBST. | Detection: ECL Basic Kit. | Exposure time: 5s.