

## Product datasheet for **TA374730**

### CHERP Rabbit Polyclonal Antibody

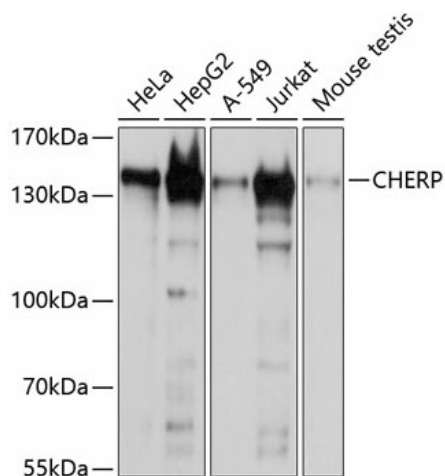
#### Product data:

Product Type:	Primary Antibodies
Applications:	WB
Recommended Dilution:	WB,1:500 - 1:2000
Reactivity:	Human, Mouse, Rat
Modifications:	Unmodified
Host:	Rabbit
Isotype:	IgG
Clonality:	Polyclonal
Immunogen:	A synthetic peptide corresponding to a sequence within amino acids 650-750 of human CHERP (NP_006378.3).
Formulation:	Buffer: PBS with 0.02% sodium azide,50% glycerol,pH7.3.
Concentration:	lot specific
Purification:	Affinity purification
Conjugation:	Unconjugated
Storage:	Store at -20°C. Avoid freeze / thaw cycles.
Stability:	Shelf life: one year from despatch.
Predicted Protein Size:	103kDa
Gene Name:	calcium homeostasis endoplasmic reticulum protein
Database Link:	<a href="#">Entrez Gene 10523 Human Q8IWX8</a>
Background:	Involved in calcium homeostasis, growth and proliferation.
Synonyms:	DAN16; DAN26; ERPROT213-21; SCAF6; SRA1



[View online »](#)

## Product images:



Western blot analysis of extracts of various cell lines, using CHERP antibody (TA374730) at 1:1000 dilution. | Secondary antibody: HRP Goat Anti-Rabbit IgG (H+L) at 1:10000 dilution. | Lysates/proteins: 25ug per lane. | Blocking buffer: 3% nonfat dry milk in TBST. | Detection: ECL Basic Kit . | Exposure time: 60s.