

Product datasheet for **TA374725S**

Chk1 (CHEK1) Rabbit Polyclonal Antibody

Product data:

Product Type:	Primary Antibodies
Applications:	IHC, WB
Recommended Dilution:	WB,1:500 - 1:2000 IHC,1:50 - 1:200
Reactivity:	Human, Mouse, Rat
Modifications:	Phospho S280
Host:	Rabbit
Isotype:	IgG
Clonality:	Polyclonal
Immunogen:	A synthetic phosphorylated peptide around S280 of human Chk1 (NP_001265.2).
Formulation:	PBS with 0.05% proclin300,50% glycerol,pH7.3.
Concentration:	lot specific
Purification:	Affinity purification
Conjugation:	Unconjugated
Storage:	Store at -20°C. Avoid freeze / thaw cycles.
Stability:	Shelf life: one year from despatch.
Predicted Protein Size:	43kDa/50kDa/54kDa
Gene Name:	checkpoint kinase 1
Database Link:	Entrez Gene 1111 Human O14757

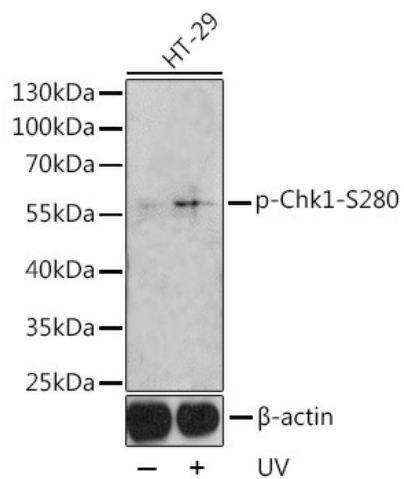
Background: The protein encoded by this gene belongs to the Ser/Thr protein kinase family. It is required for checkpoint mediated cell cycle arrest in response to DNA damage or the presence of unreplicated DNA. This protein acts to integrate signals from ATM and ATR, two cell cycle proteins involved in DNA damage responses, that also associate with chromatin in meiotic prophase I. Phosphorylation of CDC25A protein phosphatase by this protein is required for cells to delay cell cycle progression in response to double-strand DNA breaks. Several alternatively spliced transcript variants have been found for this gene.



[View online »](#)

Synonyms: CHK1

Product images:



Western blot analysis of extracts of HT-29 cells, using Phospho-Chk1-Ser280 antibody ([TA374725]) at 1:1000 dilution. | Secondary antibody: HRP Goat Anti-Rabbit IgG (H+L) at 1:10000 dilution. | Lysates/proteins: 25ug per lane. | Blocking buffer: 3% BSA.