

Product datasheet for TA374721

CHD7 Rabbit Polyclonal Antibody

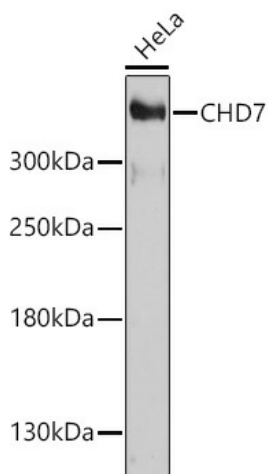
Product data:

Product Type:	Primary Antibodies
Applications:	WB
Recommended Dilution:	WB,1:500 - 1:2000
Reactivity:	Human
Host:	Rabbit
Isotype:	IgG
Clonality:	Polyclonal
Immunogen:	Recombinant fusion protein containing a sequence corresponding to amino acids 1-300 of human CHD7 (NP_060250.2).
Formulation:	Buffer: PBS with 0.02% sodium azide,50% glycerol,pH7.3.
Concentration:	lot specific
Purification:	Affinity purification
Conjugation:	Unconjugated
Storage:	Store at -20°C. Avoid freeze / thaw cycles.
Stability:	Shelf life: one year from despatch.
Predicted Protein Size:	335kDa
Gene Name:	chromodomain helicase DNA binding protein 7
Database Link:	Entrez Gene 55636 Human Q9P2D1
Background:	This gene encodes a protein that contains several helicase family domains. Mutations in this gene have been found in some patients with the CHARGE syndrome. Two transcript variants encoding different isoforms have been found for this gene.
Synonyms:	CHD-7; FLJ20357; FLJ20361; IS3; KAL5; KIAA1416



[View online »](#)

Product images:



Western blot analysis of extracts of HeLa cells, using CHD7 antibody (TA374721) at 1:1000 dilution. | Secondary antibody: HRP Goat Anti-Rabbit IgG (H+L) at 1:10000 dilution. | Lysates/proteins: 25ug per lane. | Blocking buffer: 3% nonfat dry milk in TBST. | Detection: ECL Basic Kit . | Exposure time: 5min.