

Product datasheet for **TA374711S**

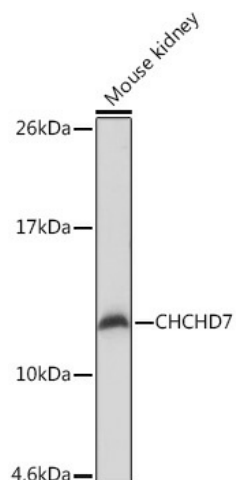
CHCHD7 Rabbit Polyclonal Antibody

Product data:

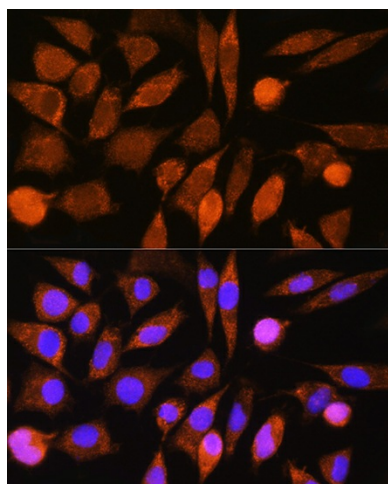
Product Type:	Primary Antibodies
Applications:	ELISA, ICC/IF, WB
Recommended Dilution:	WB, 1:500 - 1:2000 IF/ICC, 1:50 - 1:200 ELISA, Recommended starting concentration is 1 µg/mL. Please optimize the concentration based on your specific assay requirements.
Reactivity:	Human, Mouse, Rat
Host:	Rabbit
Isotype:	IgG
Clonality:	Polyclonal
Formulation:	Buffer: PBS with 0.02% sodium azide, 50% glycerol, pH 7.3.
Concentration:	lot specific
Purification:	Affinity purification
Conjugation:	Unconjugated
Storage:	Store at -20°C. Avoid freeze / thaw cycles.
Stability:	Shelf life: one year from despatch.
Predicted Protein Size:	10kDa
Gene Name:	coiled-coil-helix-coiled-coil-helix domain containing 7
Database Link:	Entrez Gene 79145 Human Q9BUK0
Background:	Predicted to be located in mitochondrial intermembrane space.
Synonyms:	FLJ40966; MGC2217



[View online »](#)

Product images:


Western blot analysis of lysates from Mouse kidney



Immunofluorescence analysis of L929 cells using CHCHD7 Rabbit pAb ([TA374711]) at dilution of 1:100. Secondary antibody: Cy3-conjugated Goat anti-Rabbit IgG (H+L) (AS007) at 1:500 dilution. Blue: DAPI for nuclear staining.