

## Product datasheet for **TA374706S**

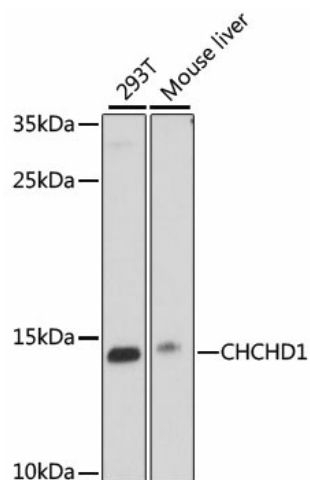
### CHCHD1 Rabbit Polyclonal Antibody

#### Product data:

Product Type:	Primary Antibodies
Applications:	ELISA, WB
Recommended Dilution:	WB, 1:500 - 1:2000 ELISA, Recommended starting concentration is 1 µg/mL. Please optimize the concentration based on your specific assay requirements.
Reactivity:	Human, Mouse
Modifications:	Unmodified
Host:	Rabbit
Isotype:	IgG
Clonality:	Polyclonal
Formulation:	Buffer: PBS with 0.02% sodium azide, 50% glycerol, pH 7.3.
Concentration:	lot specific
Purification:	Affinity purification
Conjugation:	Unconjugated
Storage:	Store at -20°C. Avoid freeze / thaw cycles.
Stability:	Shelf life: one year from despatch.
Predicted Protein Size:	13kDa
Gene Name:	coiled-coil-helix-coiled-coil-helix domain containing 1
Database Link:	<a href="#">Entrez Gene 118487 Human</a> <a href="#">Q96BP2</a>
Background:	Enables RNA binding activity. Predicted to be involved in mitochondrial translation. Located in cytosol; mitochondrion; and nuclear lumen.
Synonyms:	C10orf34; C2360; FLJ25854



[View online »](#)

**Product images:**

Western blot analysis of various lysates using CHCHD1 Rabbit pAb ([TA374706]) at 1000 dilution.

Secondary antibody: HRP-conjugated Goat anti-Rabbit IgG (H+L) (AS014) at 1:10000 dilution.

Lysates/proteins: 25µg per lane.

Blocking buffer: 3% nonfat dry milk in TBST.

Detection: ECL Basic Kit (RM00020).

Exposure time: 90s.