

Product datasheet for **TA374704**

Choline Acetyltransferase (CHAT) Rabbit Polyclonal Antibody

Product data:

Product Type:	Primary Antibodies
Applications:	ICC/IF, WB
Recommended Dilution:	WB,1:1000 - 1:2000 IHC,1:50 - 1:200 IF,1:50 - 1:200
Reactivity:	Human, Mouse, Rat
Modifications:	Unmodified
Host:	Rabbit
Isotype:	IgG
Clonality:	Polyclonal
Immunogen:	Recombinant fusion protein containing a sequence corresponding to amino acids 331-630 of human CHAT (NP_001136401.1).
Formulation:	Buffer: PBS with 0.02% sodium azide,50% glycerol,pH7.3.
Concentration:	lot specific
Purification:	Affinity purification
Conjugation:	Unconjugated
Storage:	Store at -20°C. Avoid freeze / thaw cycles.
Stability:	Shelf life: one year from despatch.
Predicted Protein Size:	70kDa/74kDa/82kDa
Gene Name:	choline O-acetyltransferase
Database Link:	Entrez Gene 1103 Human P28329



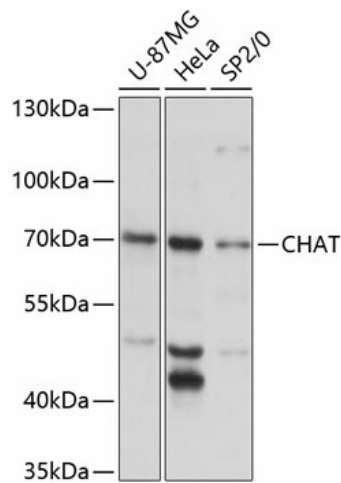
[View online »](#)

Background:

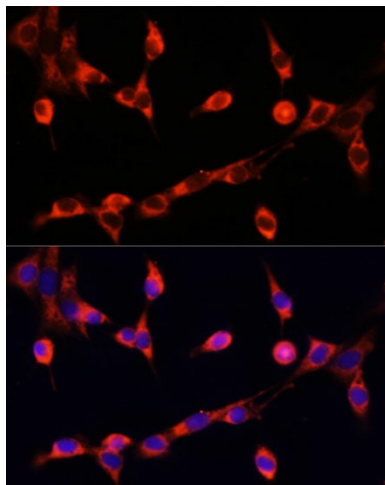
This gene encodes an enzyme which catalyzes the biosynthesis of the neurotransmitter acetylcholine. This gene product is a characteristic feature of cholinergic neurons, and changes in these neurons may explain some of the symptoms of Alzheimer's disease. Polymorphisms in this gene have been associated with Alzheimer's disease and mild cognitive impairment. Mutations in this gene are associated with congenital myasthenic syndrome associated with episodic apnea. Multiple transcript variants encoding different isoforms have been found for this gene, and some of these variants have been shown to encode more than one isoform.

Synonyms:

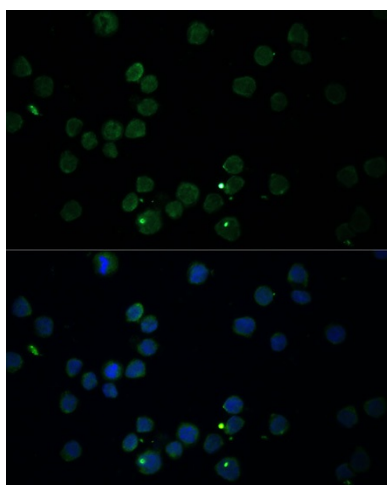
CHOACTase; CMS1A; CMS1A2

Product images:


Western blot analysis of extracts of various cell lines, using CHAT antibody (TA374704) at 1:3000 dilution. | Secondary antibody: HRP Goat Anti-Rabbit IgG (H+L) at 1:10000 dilution. | Lysates/proteins: 25ug per lane. | Blocking buffer: 3% nonfat dry milk in TBST. | Detection: ECL Basic Kit. | Exposure time: 10s.



Immunofluorescence analysis of NIH/3T3 cells using CHAT antibody (TA374704) at dilution of 1:100. Blue: DAPI for nuclear staining.



Immunofluorescence analysis of THP-1 cells using CHAT antibody (TA374704) at dilution of 1:100.
Blue: DAPI for nuclear staining.