

## Product datasheet for **TA374703S**

### **C13orf8 (CHAMP1) Rabbit Polyclonal Antibody**

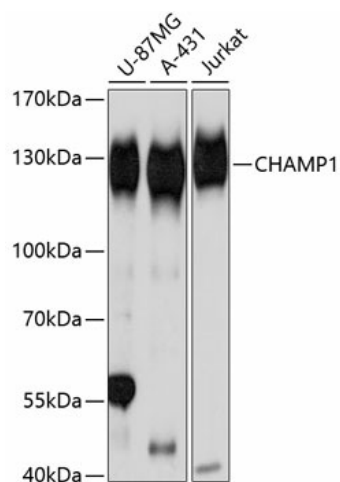
#### **Product data:**

Product Type:	Primary Antibodies
Applications:	ELISA, ICC/IF, WB
Recommended Dilution:	WB, 1:500 - 1:2000 IF/ICC, 1:50 - 1:100 ELISA, Recommended starting concentration is 1 µg/mL. Please optimize the concentration based on your specific assay requirements.
Reactivity:	Human, Mouse
Modifications:	Unmodified
Host:	Rabbit
Isotype:	IgG
Clonality:	Polyclonal
Formulation:	Buffer: PBS with 0.02% sodium azide, 50% glycerol, pH 7.3.
Concentration:	lot specific
Purification:	Affinity purification
Conjugation:	Unconjugated
Storage:	Store at -20°C. Avoid freeze / thaw cycles.
Stability:	Shelf life: one year from despatch.
Predicted Protein Size:	89kDa
Gene Name:	chromosome alignment maintaining phosphoprotein 1
Database Link:	<a href="#">Entrez Gene 283489 Human</a> <a href="#">Q96JM3</a>
Background:	This gene encodes a zinc finger protein that functions as a regulator of chromosome segregation in mitosis. The encoded protein is required for correct alignment of chromosomes on the metaphase plate, and plays a role in maintaining the attachment of sister kinetochores to microtubules from opposite spindle poles. Mutations in this gene are associated with an autosomal dominant form of intellectual disability.
Synonyms:	RGD1311283; Zfp828



[View online »](#)

## Product images:



Western blot analysis of various lysates using CHAMP1 Rabbit pAb ([TA374703]) at 1:3000 dilution.

Secondary antibody: HRP-conjugated Goat anti-Rabbit IgG (H+L) at 1:10000 dilution.

Lysates/proteins: 25µg per lane.

Blocking buffer: 3% nonfat dry milk in TBST.

Detection: ECL Basic Kit .

Exposure time: 1s.

Immunofluorescence analysis of Hela cells using CHAMP1 Rabbit pAb ([TA374703]) at dilution of 1:100 (40x lens). Secondary antibody: Cy3-conjugated Goat anti-Rabbit IgG (H+L) (AS007) at 1:500 dilution. Blue: DAPI for nuclear staining.