

## Product datasheet for **TA374703**

### **C13orf8 (CHAMP1) Rabbit Polyclonal Antibody**

#### **Product data:**

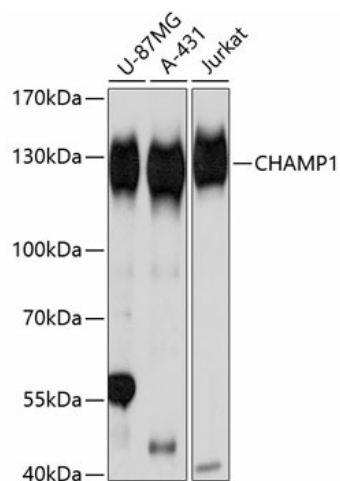
|                                |   |
|--------------------------------|---|
| <b>Product Type:</b>           | Primary Antibodies  |
| <b>Applications:</b>           | ICC/IF, WB  |
| <b>Recommended Dilution:</b>   | WB,1:500 - 1:2000<br>IHC,1:50 - 1:100<br>IF,1:50 - 1:100  |
| <b>Reactivity:</b>             | Human   |
| <b>Modifications:</b>          | Unmodified  |
| <b>Host:</b>                   | Rabbit  |
| <b>Isotype:</b>                | IgG   |
| <b>Clonality:</b>              | Polyclonal  |
| <b>Immunogen:</b>              | Recombinant fusion protein containing a sequence corresponding to amino acids 563-812 of human CHAMP1 (NP_115812.1).  |
| <b>Formulation:</b>            | Buffer: PBS with 0.02% sodium azide,50% glycerol,pH7.3.   |
| <b>Concentration:</b>          | lot specific  |
| <b>Purification:</b>           | Affinity purification   |
| <b>Conjugation:</b>            | Unconjugated  |
| <b>Storage:</b>                | Store at -20°C. Avoid freeze / thaw cycles.   |
| <b>Stability:</b>              | Shelf life: one year from despatch.   |
| <b>Predicted Protein Size:</b> | 89kDa   |
| <b>Gene Name:</b>              | chromosome alignment maintaining phosphoprotein 1   |
| <b>Database Link:</b>          | <a href="#">Entrez Gene 283489 Human</a><br><a href="#">Q96JM3</a>  |
| <b>Background:</b>             | This gene encodes a zinc finger protein that functions as a regulator of chromosome segregation in mitosis. The encoded protein is required for correct alignment of chromosomes on the metaphase plate, and plays a role in maintaining the attachment of sister kinetochores to microtubules from opposite spindle poles. Mutations in this gene are associated with autosomal dominant mental retardation-40. [provided by RefSeq, Oct 2016] |



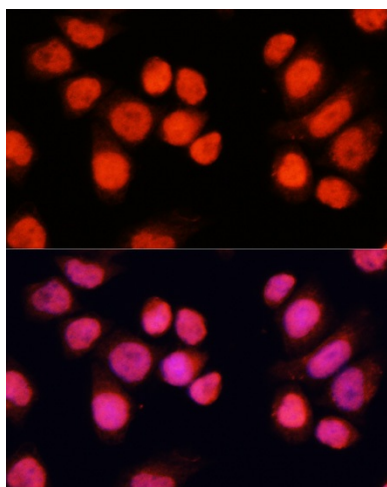
[View online »](#)

Synonyms: RGD1311283; Zfp828

### Product images:



Western blot analysis of extracts of various cell lines, using CHAMP1 Antibody (TA374703) at 1:3000 dilution. | Secondary antibody: HRP Goat Anti-Rabbit IgG (H+L) at 1:10000 dilution. | Lysates/proteins: 25ug per lane. | Blocking buffer: 3% nonfat dry milk in TBST. | Detection: ECL Basic Kit. | Exposure time: 1s.



Immunofluorescence analysis of HeLa cells using CHAMP1 antibody (TA374703) at dilution of 1:100 (40x lens). Blue: DAPI for nuclear staining.