

Product datasheet for **TA374700**

CHAD Rabbit Polyclonal Antibody

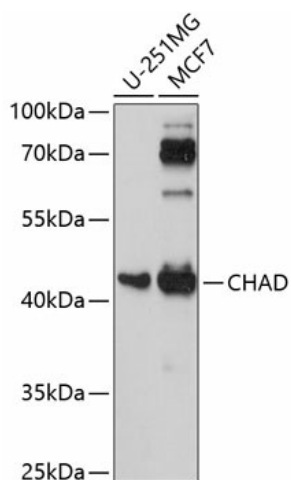
Product data:

Product Type:	Primary Antibodies
Applications:	WB
Recommended Dilution:	WB,1:500 - 1:2000
Reactivity:	Human
Modifications:	Unmodified
Host:	Rabbit
Isotype:	IgG
Clonality:	Polyclonal
Immunogen:	Recombinant fusion protein containing a sequence corresponding to amino acids 1-359 of human CHAD (NP_001258.2).
Formulation:	Buffer: PBS with 0.02% sodium azide,50% glycerol,pH7.3.
Concentration:	lot specific
Purification:	Affinity purification
Conjugation:	Unconjugated
Storage:	Store at -20°C. Avoid freeze / thaw cycles.
Stability:	Shelf life: one year from despatch.
Predicted Protein Size:	40kDa
Gene Name:	chondroadherin
Database Link:	Entrez Gene 1101 Human O15335
Background:	Chondroadherin is a cartilage matrix protein thought to mediate adhesion of isolated chondrocytes. The protein contains 11 leucine-rich repeats flanked by cysteine-rich regions. The chondroadherin messenger RNA is present in chondrocytes at all ages.
Synonyms:	chondroadherin; SLRR4A



[View online »](#)

Product images:



Western blot analysis of extracts of various cell lines, using CHAD antibody (TA374700) at 1:1000 dilution. | Secondary antibody: HRP Goat Anti-Rabbit IgG (H+L) at 1:10000 dilution. | Lysates/proteins: 25ug per lane. | Blocking buffer: 3% nonfat dry milk in TBST. | Detection: ECL Basic Kit. | Exposure time: 90s.