

Product datasheet for **TA374697**

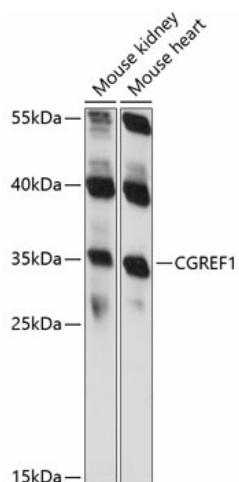
CGREF1 Rabbit Polyclonal Antibody

Product data:

Product Type:	Primary Antibodies
Applications:	WB
Recommended Dilution:	WB,1:500 - 1:2000
Reactivity:	Mouse, Rat
Modifications:	Unmodified
Host:	Rabbit
Isotype:	IgG
Clonality:	Polyclonal
Immunogen:	Recombinant fusion protein containing a sequence corresponding to amino acids 20-200 of human CGREF1 (NP_006560.3).
Formulation:	Buffer: PBS with 0.02% sodium azide,50% glycerol,pH7.3.
Concentration:	lot specific
Purification:	Affinity purification
Conjugation:	Unconjugated
Storage:	Store at -20°C. Avoid freeze / thaw cycles.
Stability:	Shelf life: one year from despatch.
Predicted Protein Size:	11kDa/14kDa/31kDa/33kDa/47kDa
Gene Name:	cell growth regulator with EF-hand domain 1
Database Link:	Q99674
Background:	Mediates cell-cell adhesion in a calcium-dependent manner (By similarity. Able to inhibit growth in several cell lines.
Synonyms:	CGR11; Hydrophobestin



[View online »](#)

Product images:

Western blot analysis of extracts of various cell lines, using CGREF1 antibody (TA374697) at 1:1000 dilution. | Secondary antibody: HRP Goat Anti-Rabbit IgG (H+L) at 1:10000 dilution. | Lysates/proteins: 25ug per lane. | Blocking buffer: 3% nonfat dry milk in TBST. | Detection: ECL Basic Kit . | Exposure time: 90s.