

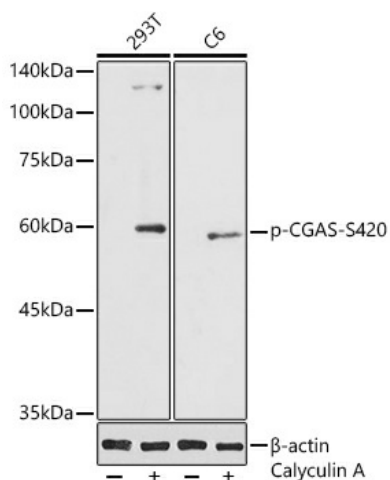
Product datasheet for TA374689S

Cgas Rabbit Polyclonal Antibody

Product data:

Product Type:	Primary Antibodies
Applications:	ELISA, WB
Recommended Dilution:	WB, 1:500 - 1:1000 ELISA, Recommended starting concentration is 1 µg/mL. Please optimize the concentration based on your specific assay requirements.
Reactivity:	Human, Rat
Modifications:	Phospho S420
Host:	Rabbit
Isotype:	IgG
Clonality:	Polyclonal
Formulation:	Buffer: PBS with 0.02% sodium azide, 50% glycerol, pH 7.3.
Concentration:	lot specific
Purification:	Affinity purification
Conjugation:	Unconjugated
Storage:	Store at -20°C. Avoid freeze / thaw cycles.
Stability:	Shelf life: one year from despatch.
Predicted Protein Size:	58kDa
Gene Name:	Mab-21 domain containing 1
Database Link:	Q8C6L5
Background:	The protein encoded by this gene is a DNA binding cytosolic protein that catalyzes the synthesis of cyclic guanosine monophosphate-adenosine monophosphate (cGAMP) after sensing the presence of DNA in the cytoplasm. cGAMP binds another protein, Stimulator of interferon genes (STING), leading to the induction of interferons, and a host immune response. Reduced expression of this gene inhibits interferon induction in the presence of some viral infections. Alternative splicing results in multiple transcript variants.
Synonyms:	C6orf150; cGAS; h-cGAS


[View online »](#)

Product images:


Western blot analysis of various lysates using Phospho-CGAS-S420 Rabbit pAb ([TA374689]) at 1:1000 dilution. 293T and C6 cells were treated by Calyculin A (100 nM) at 37°C for 30 minutes after serum-starvation overnight.

Secondary antibody: HRP-conjugated Goat anti-Rabbit IgG (H+L) (AS014) at 1:10000 dilution.

Lysates/proteins: 25µg per lane.

Blocking buffer: 3% nonfat dry milk in TBST.

Detection: ECL Basic Kit (RM00020).

Exposure time: 90s.