

Product datasheet for **TA374671**

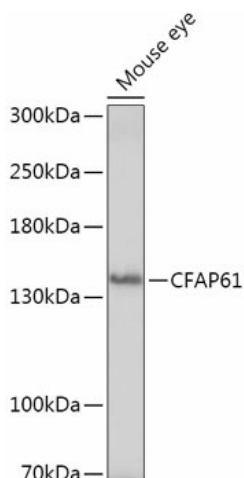
C20orf26 (CFAP61) Rabbit Polyclonal Antibody

Product data:

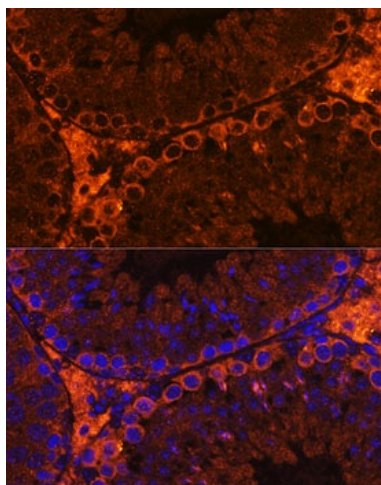
Product Type:	Primary Antibodies
Applications:	ICC/IF, IHC, WB
Recommended Dilution:	WB,1:500 - 1:2000 IHC,1:50 - 1:200 IF,1:50 - 1:200
Reactivity:	Human, Mouse
Host:	Rabbit
Isotype:	IgG
Clonality:	Polyclonal
Immunogen:	A synthetic peptide of human CFAP61.
Formulation:	Buffer: PBS with 0.02% sodium azide,50% glycerol,pH7.3.
Concentration:	lot specific
Purification:	Affinity purification
Conjugation:	Unconjugated
Storage:	Store at -20°C. Avoid freeze / thaw cycles.
Stability:	Shelf life: one year from despatch.
Gene Name:	cilia and flagella associated protein 61
Database Link:	Entrez Gene 26074 Human Q8NHU2
Background:	May regulate cilium motility through its role in the assembly of the axonemal radial spokes.



[View online »](#)

Product images:

Western blot analysis of extracts of Mouse eye, using CFAP61 antibody (TA374671) at 1:1000 dilution. | Secondary antibody: HRP Goat Anti-Rabbit IgG (H+L) at 1:10000 dilution. | Lysates/proteins: 25ug per lane. | Blocking buffer: 3% nonfat dry milk in TBST. | Detection: ECL Basic Kit . | Exposure time: 3min.



Immunofluorescence analysis of Mouse testis using CFAP61 Rabbit pAb (TA374671) at dilution of 1:100. Blue: DAPI for nuclear staining.