

## Product datasheet for **TA374669S**

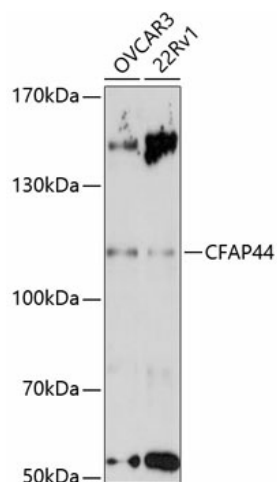
### WDR52 (CFAP44) Rabbit Polyclonal Antibody

#### Product data:

Product Type:	Primary Antibodies
Applications:	ELISA, WB
Recommended Dilution:	WB, 1:500 - 1:2000 ELISA, Recommended starting concentration is 1 µg/mL. Please optimize the concentration based on your specific assay requirements.
Reactivity:	Human, Mouse
Modifications:	Unmodified
Host:	Rabbit
Isotype:	IgG
Clonality:	Polyclonal
Formulation:	Buffer: PBS with 0.02% sodium azide, 50% glycerol, pH 7.3.
Concentration:	lot specific
Purification:	Affinity purification
Conjugation:	Unconjugated
Storage:	Store at -20°C. Avoid freeze / thaw cycles.
Stability:	Shelf life: one year from despatch.
Predicted Protein Size:	214kDa
Gene Name:	cilia and flagella associated protein 44
Database Link:	<a href="#">Entrez Gene 55779 Human Q96MT7</a>
Background:	Enables peptidase activity. Involved in sperm axoneme assembly. Acts upstream of or within microtubule cytoskeleton organization. Predicted to be located in cytoplasm; cytoskeleton; and motile cilium. Implicated in spermatogenic failure 20.



[View online »](#)

**Product images:**


Western blot analysis of various lysates using CFAP44 Rabbit pAb ([TA374669]) at 1:3000 dilution.

Secondary antibody: HRP-conjugated Goat anti-Rabbit IgG (H+L) (AS014) at 1:10000 dilution.

Lysates/proteins: 25µg per lane.

Blocking buffer: 3% nonfat dry milk in TBST.

Detection: ECL Enhanced Kit (RM00021).

Exposure time: 90s.