

Product datasheet for **TA374655**

CCDC41 (CEP83) Rabbit Polyclonal Antibody

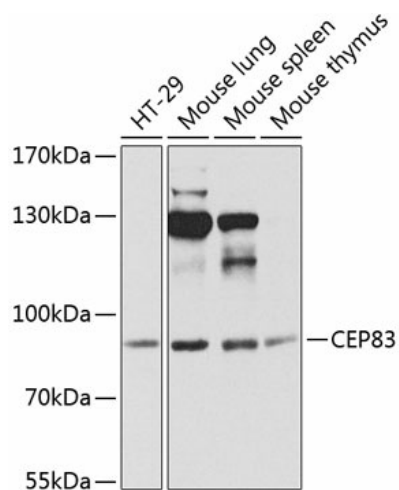
Product data:

Product Type:	Primary Antibodies
Applications:	WB
Recommended Dilution:	WB,1:500 - 1:2000
Reactivity:	Human, Mouse
Modifications:	Unmodified
Host:	Rabbit
Isotype:	IgG
Clonality:	Polyclonal
Immunogen:	Recombinant fusion protein containing a sequence corresponding to amino acids 34-260 of human CEP83 (NP_057206.2).
Formulation:	Buffer: PBS with 0.02% sodium azide,50% glycerol,pH7.3.
Concentration:	lot specific
Purification:	Affinity purification
Conjugation:	Unconjugated
Storage:	Store at -20°C. Avoid freeze / thaw cycles.
Stability:	Shelf life: one year from despatch.
Predicted Protein Size:	67kDa/82kDa
Gene Name:	centrosomal protein 83
Database Link:	Entrez Gene 51134 Human Q9Y592
Background:	The protein encoded by this gene is a centriolar protein involved in primary cilium assembly. Defects in this gene have been associated with infantile nephronophthisis and intellectual disability.



[View online »](#)

Product images:



Western blot analysis of extracts of various cell lines, using CEP83 antibody (TA374655) at 1:1000 dilution. | Secondary antibody: HRP Goat Anti-Rabbit IgG (H+L) at 1:10000 dilution. | Lysates/proteins: 25ug per lane. | Blocking buffer: 3% nonfat dry milk in TBST. | Detection: ECL Basic Kit . | Exposure time: 90s.