

Product datasheet for TA374653S

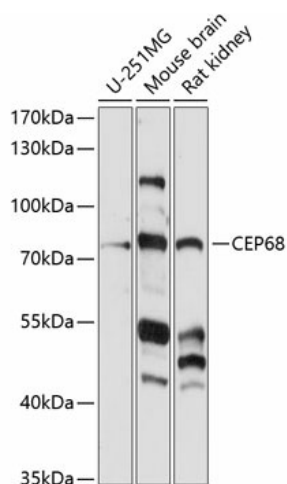
CEP68 Rabbit Polyclonal Antibody

Product data:

| | |
|-------------------------|---|
| Product Type: | Primary Antibodies |
| Applications: | ELISA, WB |
| Recommended Dilution: | WB, 1:500 - 1:2000 ELISA, Recommended starting concentration is 1 µg/mL. Please optimize the concentration based on your specific assay requirements. |
| Reactivity: | Human, Mouse, Rat |
| Modifications: | Unmodified |
| Host: | Rabbit |
| Isotype: | IgG |
| Clonality: | Polyclonal |
| Formulation: | Buffer: PBS with 0.02% sodium azide, 50% glycerol, pH 7.3. |
| Concentration: | lot specific |
| Purification: | Affinity purification |
| Conjugation: | Unconjugated |
| Storage: | Store at -20°C. Avoid freeze / thaw cycles. |
| Stability: | Shelf life: one year from despatch. |
| Predicted Protein Size: | 81kDa |
| Gene Name: | centrosomal protein 68 |
| Database Link: | Entrez Gene 23177 Human Q76N32 |
| Background: | Enables protein domain specific binding activity and protein kinase binding activity. Involved in centriole-centriole cohesion and protein localization to organelle. Located in several cellular components, including centriolar satellite; cytosol; and nucleoplasm. |
| Synonyms: | FLJ25920; FLJ36750; KIAA0582 |


[View online »](#)

Product images:



Western blot analysis of various lysates using CEP68 Rabbit pAb (TA374653) at 1:1000 dilution. Secondary antibody: HRP-conjugated Goat anti-Rabbit IgG (H+L) (AS014) at 1:10000 dilution. Lysates/proteins: 25µg per lane. Blocking buffer: 3% nonfat dry milk in TBST. Detection: ECL Enhanced Kit (RM00021). Exposure time: 90s.