

## Product datasheet for **TA374653**

### CEP68 Rabbit Polyclonal Antibody

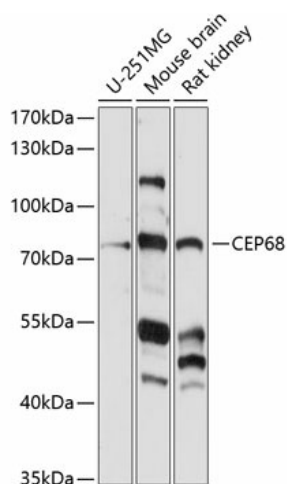
#### Product data:

Product Type:	Primary Antibodies
Applications:	WB
Recommended Dilution:	WB,1:500 - 1:2000
Reactivity:	Human, Mouse, Rat
Modifications:	Unmodified
Host:	Rabbit
Isotype:	IgG
Clonality:	Polyclonal
Immunogen:	Recombinant fusion protein containing a sequence corresponding to amino acids 1-350 of human CEP68 (NP_001306030.1).
Formulation:	Buffer: PBS with 0.02% sodium azide,50% glycerol,pH7.3.
Concentration:	lot specific
Purification:	Affinity purification
Conjugation:	Unconjugated
Storage:	Store at -20°C. Avoid freeze / thaw cycles.
Stability:	Shelf life: one year from despatch.
Predicted Protein Size:	67kDa/81kDa
Gene Name:	centrosomal protein 68
Database Link:	<a href="#">Entrez Gene 23177 Human Q76N32</a>
Background:	Involved in maintenance of centrosome cohesion, probably as part of a linker structure which prevents centrosome splitting. Required for localization of CDK5RAP2 to the centrosome during interphase.
Synonyms:	FLJ25920; FLJ36750; KIAA0582



[View online »](#)

## Product images:



Western blot analysis of extracts of various cell lines, using CEP68 antibody (TA374653) at 1:1000 dilution. | Secondary antibody: HRP Goat Anti-Rabbit IgG (H+L) at 1:10000 dilution. | Lysates/proteins: 25ug per lane. | Blocking buffer: 3% nonfat dry milk in TBST. | Detection: ECL Enhanced Kit. | Exposure time: 90s.