

Product datasheet for **TA374651**

C6ORF182 (CEP57L1) Rabbit Polyclonal Antibody

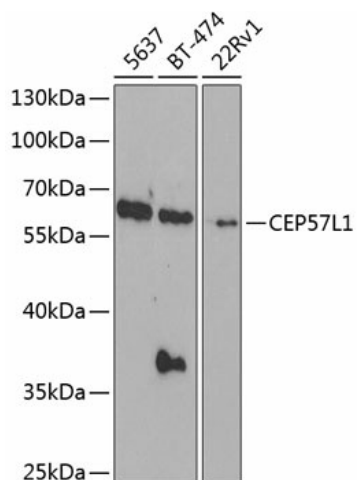
Product data:

Product Type:	Primary Antibodies
Applications:	WB
Recommended Dilution:	WB,1:500 - 1:2000
Reactivity:	Human
Modifications:	Unmodified
Host:	Rabbit
Isotype:	IgG
Clonality:	Polyclonal
Immunogen:	Recombinant fusion protein containing a sequence corresponding to amino acids 1-167 of human CEP57L1 (NP_776191.1).
Formulation:	Buffer: PBS with 0.02% sodium azide,50% glycerol,pH7.3.
Concentration:	lot specific
Purification:	Affinity purification
Conjugation:	Unconjugated
Storage:	Store at -20°C. Avoid freeze / thaw cycles.
Stability:	Shelf life: one year from despatch.
Predicted Protein Size:	45kDa/53kDa
Gene Name:	centrosomal protein 57 like 1
Database Link:	Entrez Gene 285753 Human Q8IYX8
Background:	Centrosomal protein which may be required for microtubule attachment to centrosomes.
Synonyms:	2410017P07Rik; 4930484D11Rik; AI607327; RGD1311358



[View online »](#)

Product images:



Western blot analysis of extracts of various cell lines, using CEP57L1 antibody (TA374651) at 1:1000 dilution. | Secondary antibody: HRP Goat Anti-Rabbit IgG (H+L) at 1:10000 dilution. | Lysates/proteins: 25ug per lane. | Blocking buffer: 3% nonfat dry milk in TBST. | Detection: ECL Basic Kit . | Exposure time: 90s.