

Product datasheet for TA374650S

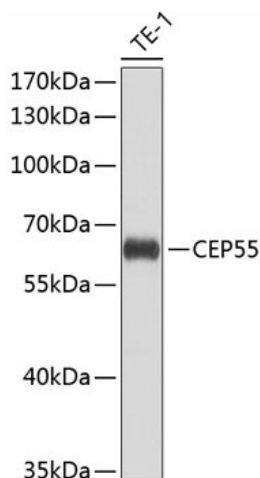
CEP55 Rabbit Polyclonal Antibody

Product data:

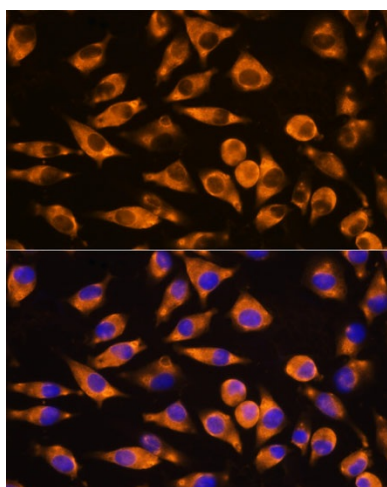
Product Type:	Primary Antibodies
Applications:	ELISA, ICC/IF, WB
Recommended Dilution:	WB, 1:500 - 1:2000 IF/ICC, 1:50 - 1:200 ELISA, Recommended starting concentration is 1 µg/mL. Please optimize the concentration based on your specific assay requirements.
Reactivity:	Human, Mouse, Rat
Modifications:	Unmodified
Host:	Rabbit
Isotype:	IgG
Clonality:	Polyclonal
Formulation:	Buffer: PBS with 0.02% sodium azide, 50% glycerol, pH 7.3.
Concentration:	lot specific
Purification:	Affinity purification
Conjugation:	Unconjugated
Storage:	Store at -20°C. Avoid freeze / thaw cycles.
Stability:	Shelf life: one year from despatch.
Predicted Protein Size:	54kDa
Gene Name:	centrosomal protein 55
Database Link:	Entrez Gene 55165 Human Q53EZ4
Background:	Enables identical protein binding activity. Involved in cranial skeletal system development; establishment of protein localization; and midbody abscission. Acts upstream of or within mitotic cytokinesis. Located in Flemming body; centriolar satellite; and plasma membrane. Implicated in multinucleated neurons, anhydramnios, renal dysplasia, cerebellar hypoplasia and hydranencephaly.
Synonyms:	C10orf3; CT111; FLJ10540; URCC6


[View online »](#)

Product images:



Western blot analysis of lysates from THP-1 cells



Immunofluorescence analysis of L929 cells using CEP55 Rabbit pAb ([TA374650]) at dilution of 1:100. Secondary antibody: Cy3-conjugated Goat anti-Rabbit IgG (H+L) (AS007) at 1:500 dilution. Blue: DAPI for nuclear staining.