

Product datasheet for **TA374626S**

CUG BP1 (CELF1) Rabbit Polyclonal Antibody

Product data:

Product Type:	Primary Antibodies
Applications:	ELISA, IHC, IP, WB
Recommended Dilution:	WB, 1:200 - 1:2000 IHC-P, 1:50 - 1:200 IP, 0.5µg-4µg antibody for 200µg-400µg extracts of whole cells ELISA, Recommended starting concentration is 1 µg/mL. Please optimize the concentration based on your specific assay requirements.
Reactivity:	Human, Mouse, Rat
Modifications:	Unmodified
Host:	Rabbit
Isotype:	IgG
Clonality:	Polyclonal
Formulation:	Buffer: PBS with 0.02% sodium azide, 50% glycerol, pH 7.3.
Concentration:	lot specific
Purification:	Affinity purification
Conjugation:	Unconjugated
Storage:	Store at -20°C. Avoid freeze / thaw cycles.
Stability:	Shelf life: one year from despatch.
Predicted Protein Size:	52kDa
Gene Name:	CUGBP, Elav-like family member 1
Database Link:	Entrez Gene 10658 Human Q92879



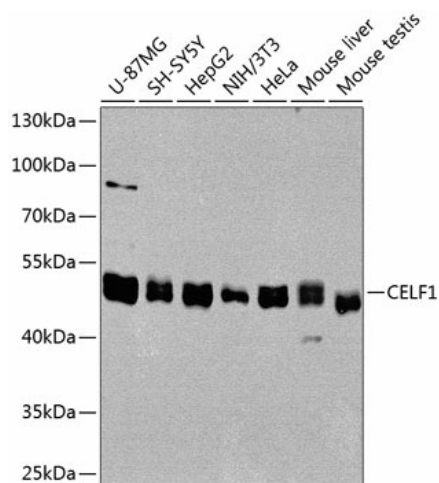
[View online »](#)

Background:

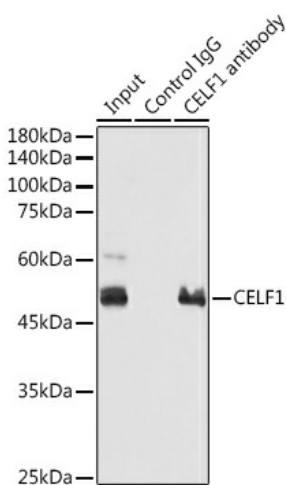
Members of the CELF/BRUNOL protein family contain two N-terminal RNA recognition motif (RRM) domains, one C-terminal RRM domain, and a divergent segment of 160-230 aa between the second and third RRM domains. Members of this protein family regulate pre-mRNA alternative splicing and may also be involved in mRNA editing, and translation. This gene may play a role in myotonic dystrophy type 1 (DM1) via interactions with the dystrophin myotonic-protein kinase (DMPK) gene. Alternative splicing results in multiple transcript variants encoding different isoforms.

Synonyms:

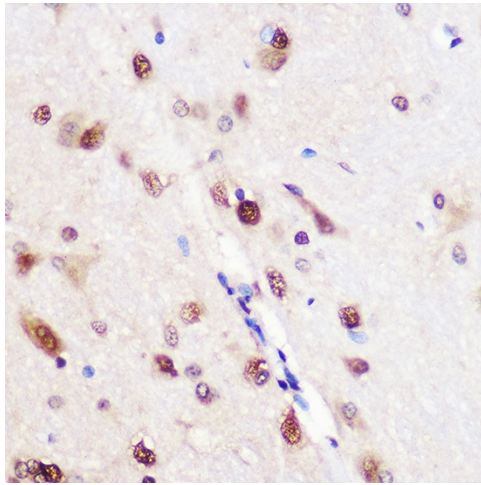
1600010O03Rik; AA407467; Brunol2; CUG-BP; CUG-BP1; CUGBP; Cugbp1; D2Wsu101e; HNAB50; NAB50

Product images:


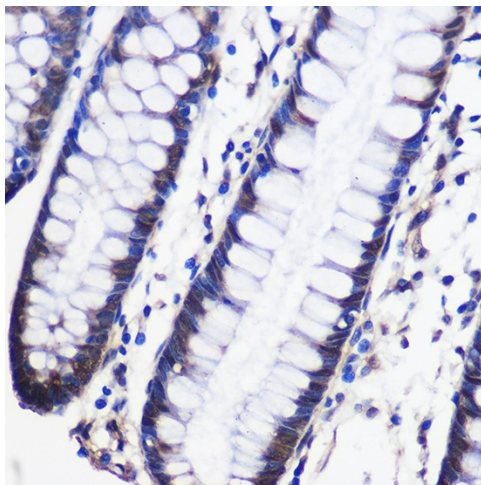
Western blot analysis of various lysates using CELF1 Rabbit pAb ([TA374626]) at 1:1000 dilution. Secondary antibody: HRP-conjugated Goat anti-Rabbit IgG (H+L) (AS014) at 1:10000 dilution. Lysates/proteins: 25µg per lane. Blocking buffer: 3% nonfat dry milk in TBST. Detection: ECL Basic Kit (RM00020). Exposure time: 60s.



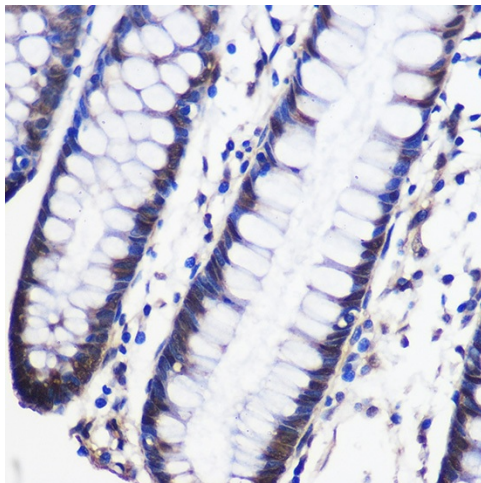
Immunoprecipitation analysis of 300 µg extracts of 293T cells using 3 µg CELF1 antibody ([TA374626]). Western blot was performed from the immunoprecipitate using CELF1 antibody ([TA374626]) at a dilution of 1:1000.



Immunohistochemistry analysis of paraffin-embedded Mouse brain using CELF1 Rabbit pAb ([TA374626]) at dilution of 1:100 (40x lens). Microwave antigen retrieval performed with 0.01M PBS Buffer (pH 7.2) prior to IHC staining.



Immunohistochemistry analysis of paraffin-embedded Rat brain using CELF1 Rabbit pAb ([TA374626]) at dilution of 1:100 (40x lens). Microwave antigen retrieval performed with 0.01M PBS Buffer (pH 7.2) prior to IHC staining.



Immunohistochemistry analysis of paraffin-embedded Human colon using CELF1 Rabbit pAb ([TA374626]) at dilution of 1:100 (40x lens). Microwave antigen retrieval performed with 0.01M PBS Buffer (pH 7.2) prior to IHC staining.