

## Product datasheet for **TA374626**

### **CUG BP1 (CELF1) Rabbit Polyclonal Antibody**

#### **Product data:**

Product Type:	Primary Antibodies
Applications:	IHC, IP, WB
Recommended Dilution:	WB,1:200 - 1:2000 IHC,1:50 - 1:200 IP,1:50 - 1:200
Reactivity:	Human, Mouse, Rat
Modifications:	Unmodified
Host:	Rabbit
Isotype:	IgG
Clonality:	Polyclonal
Immunogen:	Recombinant fusion protein containing a sequence corresponding to amino acids 108-483 of human CELF1 (NP_941989.1).
Formulation:	Buffer: PBS with 0.02% sodium azide,50% glycerol,pH7.3.
Concentration:	lot specific
Purification:	Affinity purification
Conjugation:	Unconjugated
Storage:	Store at -20°C. Avoid freeze / thaw cycles.
Stability:	Shelf life: one year from despatch.
Predicted Protein Size:	50kDa/51kDa/52kDa/55kDa
Gene Name:	CUGBP, Elav-like family member 1
Database Link:	<a href="#">Entrez Gene 10658 Human Q92879</a>



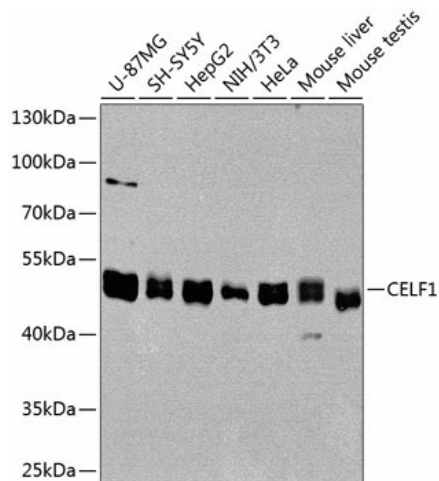
[View online »](#)

**Background:**

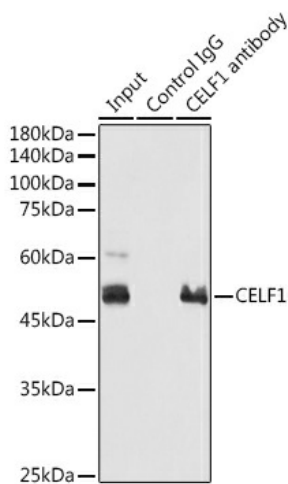
Members of the CELF/BRUNOL protein family contain two N-terminal RNA recognition motif (RRM) domains, one C-terminal RRM domain, and a divergent segment of 160-230 aa between the second and third RRM domains. Members of this protein family regulate pre-mRNA alternative splicing and may also be involved in mRNA editing, and translation. This gene may play a role in myotonic dystrophy type 1 (DM1) via interactions with the dystrophia myotonica-protein kinase (DMPK) gene. Alternative splicing results in multiple transcript variants encoding different isoforms.

**Synonyms:**

1600010O03Rik; AA407467; Brunol2; CUG-BP; CUG-BP1; CUGBP; Cugbp1; D2Wsu101e; HNAB50; NAB50

**Product images:**


Western blot analysis of extracts of various cell lines, using CELF1 antibody (TA374626) at 1:1000 dilution. | Secondary antibody: HRP Goat Anti-Rabbit IgG (H+L) at 1:10000 dilution. | Lysates/proteins: 25ug per lane. | Blocking buffer: 3% nonfat dry milk in TBST. | Detection: ECL Basic Kit. | Exposure time: 60s.



Immunoprecipitation analysis of 300ug extracts of 293T cells using 3ug CELF1 antibody (TA374626). Western blot was performed from the immunoprecipitate using CELF1 antibody (TA374626) at a dilution of 1:1000.