

## Product datasheet for **TA374614S**

### CEBP Beta (CEBPB) Rabbit Polyclonal Antibody

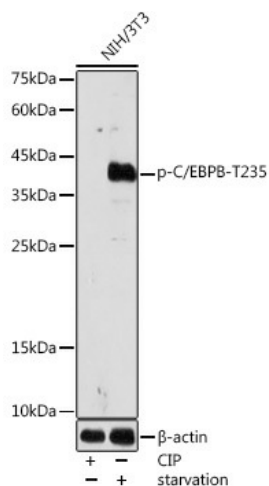
#### Product data:

Product Type:	Primary Antibodies
Applications:	WB
Recommended Dilution:	WB,1:500 - 1:2000
Reactivity:	Human, Mouse
Modifications:	Phospho T235
Host:	Rabbit
Isotype:	IgG
Clonality:	Polyclonal
Immunogen:	A phospho specific peptide corresponding to residues surrounding T235 of human C/EBPB.
Formulation:	PBS with 0.05% proclin300,50% glycerol,pH7.3.
Concentration:	lot specific
Purification:	Affinity purification
Conjugation:	Unconjugated
Storage:	Store at -20°C. Avoid freeze / thaw cycles.
Stability:	Shelf life: one year from despatch.
Predicted Protein Size:	36kDa
Gene Name:	CCAAT/enhancer binding protein beta
Database Link:	<a href="#">Entrez Gene 1051 Human P17676</a>
Background:	This intronless gene encodes a transcription factor that contains a basic leucine zipper (bZIP) domain. The encoded protein functions as a homodimer but can also form heterodimers with CCAAT/enhancer-binding proteins alpha, delta, and gamma. Activity of this protein is important in the regulation of genes involved in immune and inflammatory responses, among other processes. The use of alternative in-frame AUG start codons results in multiple protein isoforms, each with distinct biological functions.
Synonyms:	C/EBP-beta; CRP2; IL6DBP; LAP; MGC32080; NF-IL6; NFIL6; TCF5



[View online »](#)

## Product images:



Western blot analysis of extracts of NIH/3T3, using Phospho-C/EBPB-T235 antibody ([TA374614]) at 1:1000 dilution. NIH/3T3 cells were treated by CIP(20uL/400ul) at 37°C for 1 hour. NIH/3T3 cells were treated by Serum-starvation overnight at 37°C. | Secondary antibody: HRP Goat Anti-Rabbit IgG (H+L) at 1:10000 dilution. | Lysates/proteins: 25ug per lane. | Blocking buffer: 3% nonfat dry milk in TBST. | Detection: ECL Basic Kit . | Exposure time: 180s.