

## Product datasheet for **TA374574S**

### CDK8 Rabbit Polyclonal Antibody

#### Product data:

Product Type:	Primary Antibodies
Applications:	ELISA, IP, WB
Recommended Dilution:	WB, 1:500 - 1:2000 IP, 0.5µg-4µg antibody for 200µg-400µg extracts of whole cells ELISA, Recommended starting concentration is 1 µg/mL. Please optimize the concentration based on your specific assay requirements.
Reactivity:	Human, Mouse, Rat
Modifications:	Unmodified
Host:	Rabbit
Isotype:	IgG
Clonality:	Polyclonal
Formulation:	Buffer: PBS with 0.02% sodium azide, 50% glycerol, pH 7.3.
Concentration:	lot specific
Purification:	Affinity purification
Conjugation:	Unconjugated
Storage:	Store at -20°C. Avoid freeze / thaw cycles.
Stability:	Shelf life: one year from despatch.
Predicted Protein Size:	53kDa
Gene Name:	cyclin-dependent kinase 8
Database Link:	<a href="#">Entrez Gene 1024 Human P49336</a>



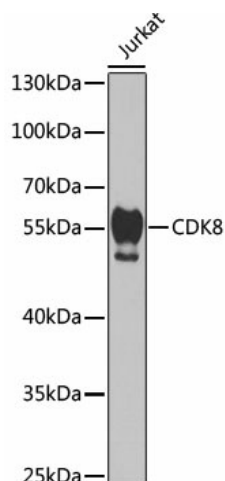
[View online »](#)

**Background:**

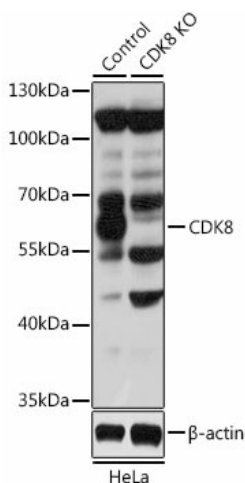
This gene encodes a member of the cyclin-dependent protein kinase (CDK) family. CDK family members are known to be important regulators of cell cycle progression. This kinase and its regulatory subunit, cyclin C, are components of the Mediator transcriptional regulatory complex, involved in both transcriptional activation and repression by phosphorylation of the carboxy-terminal domain of the largest subunit of RNA polymerase II. This kinase regulates transcription by targeting the cyclin-dependent kinase 7 subunits of the general transcription initiation factor IIH, thus providing a link between the Mediator complex and the basal transcription machinery. Multiple pseudogenes of this gene have been identified. Alternative splicing results in multiple transcript variants.

**Synonyms:**

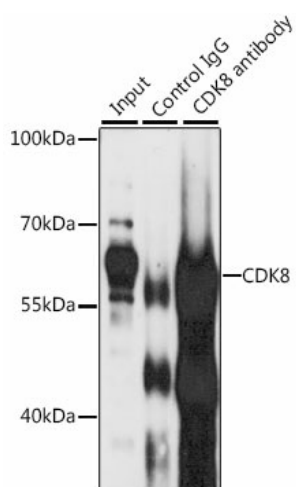
K35; MGC126074; MGC126075

**Product images:**


Western blot analysis of lysates from Jurkat cells



Western blot analysis of lysates from wild type (WT) and CDK8 knockout (KO) HeLa cells



Immunoprecipitation analysis of 200 µg extracts of Jurkat cells