

## Product datasheet for TA374555S

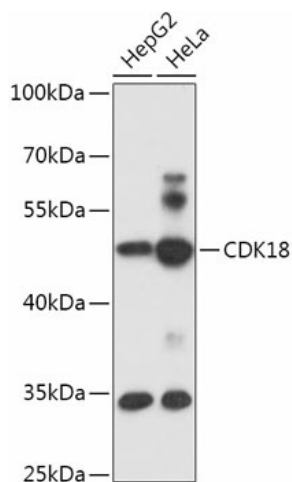
### PCTAIRE3 (CDK18) Rabbit Polyclonal Antibody

#### Product data:

Product Type:	Primary Antibodies
Applications:	ELISA, WB
Recommended Dilution:	WB, 1:500 - 1:2000 ELISA, Recommended starting concentration is 1 µg/mL. Please optimize the concentration based on your specific assay requirements.
Reactivity:	Human, Mouse
Modifications:	Unmodified
Host:	Rabbit
Isotype:	IgG
Clonality:	Polyclonal
Formulation:	Buffer: PBS with 0.02% sodium azide, 50% glycerol, pH 7.3.
Concentration:	lot specific
Purification:	Affinity purification
Conjugation:	Unconjugated
Storage:	Store at -20°C. Avoid freeze / thaw cycles.
Stability:	Shelf life: one year from despatch.
Predicted Protein Size:	54kDa
Gene Name:	cyclin-dependent kinase 18
Database Link:	<a href="#">Entrez Gene 5129 Human Q07002</a>
Background:	Predicted to enable ATP binding activity; cyclin-dependent protein serine/threonine kinase activity; and protein serine kinase activity. Predicted to be involved in protein phosphorylation and regulation of transcription involved in G1/S transition of mitotic cell cycle. Predicted to be active in cytoplasm and nucleus.
Synonyms:	PCTAIRE; PCTAIRE3; PCTK3


[View online »](#)

## Product images:



Western blot analysis of various lysates using CDK18 Rabbit pAb ([TA374555]) at 1:1000 dilution.

Secondary antibody: HRP-conjugated Goat anti-Rabbit IgG (H+L) (AS014) at 1:10000 dilution.

Lysates/proteins: 25µg per lane.

Blocking buffer: 3% nonfat dry milk in TBST.

Detection: ECL Basic Kit (RM00020).

Exposure time: 90s.