

Product datasheet for **TA374550S**

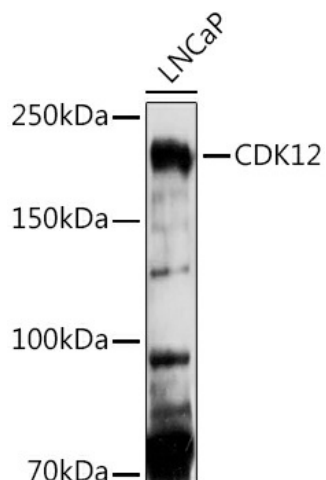
CrkRS (CDK12) Rabbit Polyclonal Antibody

Product data:

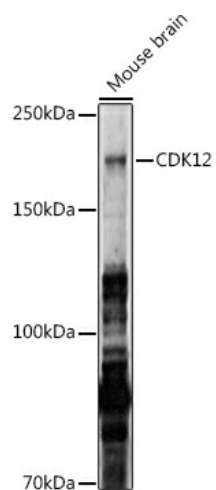
Product Type:	Primary Antibodies
Applications:	ELISA, IHC, WB
Recommended Dilution:	WB, 1:500 - 1:1000 IHC-P, 1:100 - 1:500 ELISA, Recommended starting concentration is 1 µg/mL. Please optimize the concentration based on your specific assay requirements.
Reactivity:	Human, Mouse, Rat
Modifications:	Unmodified
Host:	Rabbit
Isotype:	IgG
Clonality:	Polyclonal
Formulation:	Buffer: PBS with 0.02% sodium azide, 50% glycerol, pH 7.3.
Concentration:	lot specific
Purification:	Affinity purification
Conjugation:	Unconjugated
Storage:	Store at -20°C. Avoid freeze / thaw cycles.
Stability:	Shelf life: one year from despatch.
Predicted Protein Size:	164kDa
Gene Name:	cyclin-dependent kinase 12
Database Link:	Entrez Gene 51755 Human Q9NYV4
Background:	Enables RNA polymerase II CTD heptapeptide repeat kinase activity and cyclin binding activity. Involved in phosphorylation of RNA polymerase II C-terminal domain; protein autophosphorylation; and regulation of MAP kinase activity. Located in nuclear speck. Part of cyclin K-CDK12 complex.
Synonyms:	1810022J16Rik; AI646528; Crk7; Crkrs; D11Ert752e; Pksc


[View online »](#)

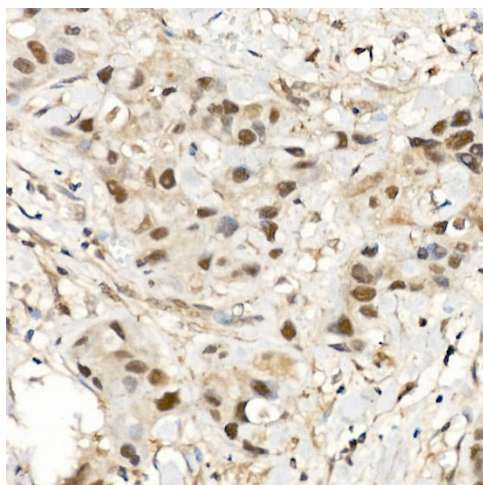
Product images:



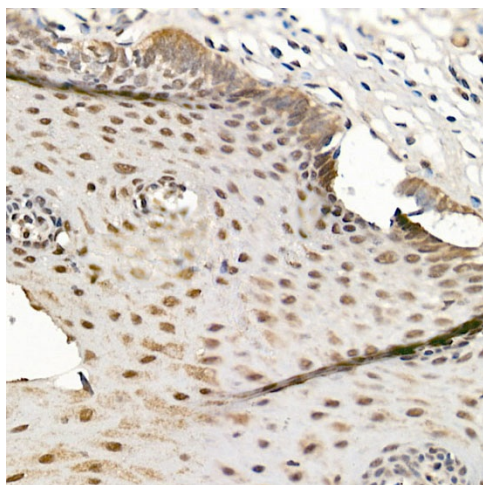
Western blot analysis of lysates from LNCaP cells



Western blot analysis of lysates from Mouse brain



Immunohistochemistry analysis of paraffin-embedded Human breast cancer using CDK12 Rabbit pAb ([TA374550]) at dilution of 1:500 (40x lens). High pressure antigen retrieval performed with 0.01M Citrate Bufferr (pH 6.0) prior to IHC staining.



Immunohistochemistry analysis of paraffin-embedded Human esophagus using CDK12 Rabbit pAb ([TA374550]) at dilution of 1:500 (40x lens). High pressure antigen retrieval performed with 0.01M Citrate Bufferr (pH 6.0) prior to IHC staining.