

Product datasheet for **TA374541**

Protocadherin 21 (CDHR1) Rabbit Polyclonal Antibody

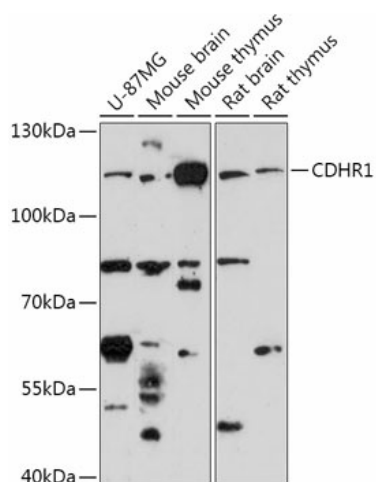
Product data:

Product Type:	Primary Antibodies
Applications:	WB
Recommended Dilution:	WB,1:500 - 1:2000
Reactivity:	Human, Mouse, Rat
Modifications:	Unmodified
Host:	Rabbit
Isotype:	IgG
Clonality:	Polyclonal
Immunogen:	Recombinant fusion protein containing a sequence corresponding to amino acids 20-300 of human CDHR1 (NP_001165442.1).
Formulation:	Buffer: PBS with 0.02% sodium azide,50% glycerol,pH7.3.
Concentration:	lot specific
Purification:	Affinity purification
Conjugation:	Unconjugated
Storage:	Store at -20°C. Avoid freeze / thaw cycles.
Stability:	Shelf life: one year from despatch.
Gene Name:	cadherin related family member 1
Database Link:	Entrez Gene 92211 Human Q96JP9
Background:	This gene belongs to the cadherin superfamily of calcium-dependent cell adhesion molecules. The encoded protein is a photoreceptor-specific cadherin that plays a role in outer segment disc morphogenesis. Mutations in this gene are associated with inherited retinal dystrophies. Alternatively spliced transcript variants encoding different isoforms have been identified. [provided by RefSeq, Jul 2013]
Synonyms:	CORD15; PCDH21; PRCAD; RP65



[View online »](#)

Product images:



Western blot analysis of extracts of various cell lines, using CDHR1 antibody (TA374541) at 1:1000 dilution. | Secondary antibody: HRP Goat Anti-Rabbit IgG (H+L) at 1:10000 dilution. | Lysates/proteins: 25ug per lane. | Blocking buffer: 3% nonfat dry milk in TBST. | Detection: ECL Enhanced Kit . | Exposure time: 3min.