

## Product datasheet for **TA374530**

### LI Cadherin (CDH17) Rabbit Polyclonal Antibody

#### Product data:

|                         |   |
|-------------------------|---|
| Product Type:           | Primary Antibodies                                      |
| Applications:           | WB  |
| Recommended Dilution:   | WB,1:500 - 1:2000                                       |
| Reactivity:             | Human, Mouse  |
| Modifications:          | Unmodified  |
| Host:                   | Rabbit  |
| Isotype:                | IgG   |
| Clonality:              | Polyclonal  |
| Immunogen:              | Recombinant protein of human LI Cadherin/Cadherin-17    |
| Formulation:            | Buffer: PBS with 0.02% sodium azide,50% glycerol,pH7.3. |
| Concentration:          | lot specific  |
| Purification:           | Affinity purification                                   |
| Conjugation:            | Unconjugated  |
| Storage:                | Store at -20°C. Avoid freeze / thaw cycles.             |
| Stability:              | Shelf life: one year from despatch.                     |
| Predicted Protein Size: | 92kDa   |
| Gene Name:              | cadherin 17   |
| Database Link:          | <a href="#">Entrez Gene 1015 Human Q12864</a>           |

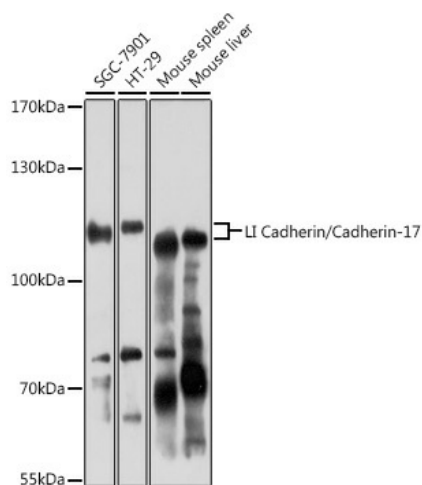
**Background:** This gene is a member of the cadherin superfamily, genes encoding calcium-dependent, membrane-associated glycoproteins. The encoded protein is cadherin-like, consisting of an extracellular region, containing 7 cadherin domains, and a transmembrane region but lacking the conserved cytoplasmic domain. The protein is a component of the gastrointestinal tract and pancreatic ducts, acting as an intestinal proton-dependent peptide transporter in the first step in oral absorption of many medically important peptide-based drugs. The protein may also play a role in the morphological organization of liver and intestine. Alternative splicing results in multiple transcript variants.



[View online »](#)

Synonyms: cadherin; cadherin-16; CDH16; FLJ26931; HPT-1; HPT1; LI-cadherin; MGC138218; MGC142024

### Product images:



Western blot analysis of extracts of various cell lines, using LI Cadherin/Cadherin-17 antibody (TA374530) at 1:3000 dilution. Secondary antibody: HRP Goat Anti-Rabbit IgG (H+L) at 1:10000 dilution. Lysates/proteins: 25ug per lane. Blocking buffer: 3% nonfat dry milk in TBST. Detection: ECL Enhanced Kit. Exposure time: 10s.