

Product datasheet for **TA374523S**

E Cadherin (CDH1) Rabbit Polyclonal Antibody

Product data:

Product Type:	Primary Antibodies
Applications:	IP, WB
Recommended Dilution:	WB,1:500 - 1:2000 IP,1:50 - 1:200
Reactivity:	Human, Mouse, Rat
Host:	Rabbit
Isotype:	IgG
Clonality:	Polyclonal
Immunogen:	A synthetic peptide corresponding to a sequence within amino acids 800-882 of pan-cadherin (NP_004351.1).
Formulation:	Buffer: PBS with 0.02% sodium azide,50% glycerol,pH7.3.
Concentration:	lot specific
Purification:	Affinity purification
Conjugation:	Unconjugated
Storage:	Store at -20°C. Avoid freeze / thaw cycles.
Stability:	Shelf life: one year from despatch.
Gene Name:	cadherin 1
Database Link:	Entrez Gene 999 Human P12830



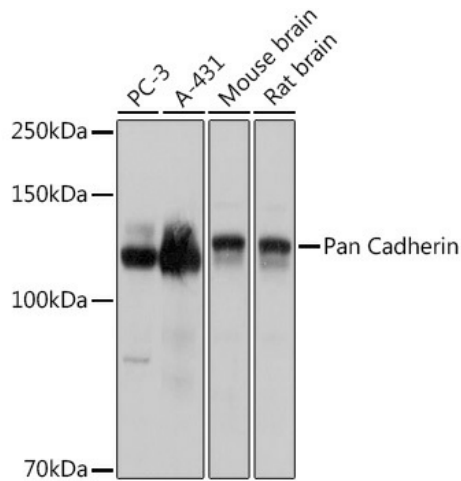
[View online »](#)

Background:

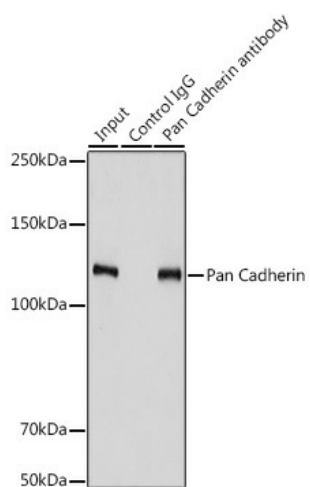
Cadherin is one of a class of integral-membrane glycoproteins that are involved in cell to cell attachment for preserving the integrity of all solid tissues. Cadherins have three major regions: the Ca²⁺-dependent extracellular region that mediates adhesion (cadherin to cadherin) for cell to cell binding; the transmembrane region; and the cytoplasmic region that extends into the cell and interacts with catenins, which in turn are linked to the actin of the cytoskeleton. Cadherins are differentially expressed during development and in adult organs. Since many cell types express multiple cadherin subclasses simultaneously (the combination differs with cell type), it can be inferred that the adhesion properties of individual cells are thus governed by varying the combinations of cadherins. Altered expression of cadherins are involved in invasion and metastasis of tumour cells. The classical cadherins (e.g. E-, N-, and P-cadherins) are the most common family members. E-cadherin (also known as uvomorulin) is concentrated in the belt desmosome in epithelial cells; N-cadherin is found in nerve, muscle, and lens cells and helps maintain the integrity of neuronal aggregates; P-cadherin is expressed in placental and epidermal cells.

Synonyms:

Arc-1; CD324; CDHE; E-Cadherin; ECAD; LCAM; UVO; uvomorulin

Product images:

Western blot analysis of extracts of various cell lines, using Pan Cadherin antibody ([TA374523]) at 1:3000 dilution. | Secondary antibody: HRP Goat Anti-Rabbit IgG (H+L) at 1:10000 dilution. | Lysates/proteins: 25ug per lane. | Blocking buffer: 3% nonfat dry milk in TBST. | Detection: ECL Basic Kit. | Exposure time: 1s.



Immunoprecipitation analysis of 900ug extracts of PC-3 cells using 3ug Pan Cadherin antibody ([TA374523]). Western blot was performed from the immunoprecipitate using Pan Cadherin antibody ([TA374523]) at a dilution of 1:3000.