

## Product datasheet for **TA374498S**

### CDC20 Rabbit Polyclonal Antibody

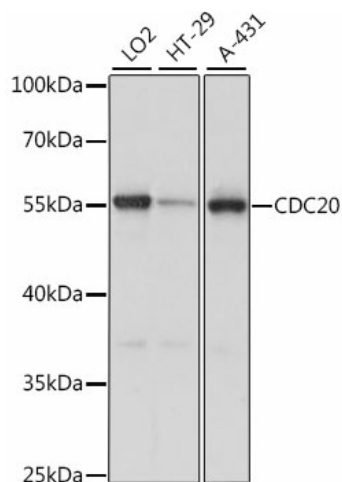
#### Product data:

Product Type:	Primary Antibodies
Applications:	ELISA, ICC/IF, IHC, IP, WB
Recommended Dilution:	WB, 1:500 - 1:1000 IHC-P, 1:50 - 1:100 IF/ICC, 1:50 - 1:100 IP, 0.5µg-4µg antibody for 200µg-400µg extracts of whole cells ELISA, Recommended starting concentration is 1 µg/mL. Please optimize the concentration based on your specific assay requirements.
Reactivity:	Human, Mouse, Rat
Modifications:	Unmodified
Host:	Rabbit
Isotype:	IgG
Clonality:	Polyclonal
Formulation:	Buffer: PBS with 0.02% sodium azide, 50% glycerol, pH7.3.
Concentration:	lot specific
Purification:	Affinity purification
Conjugation:	Unconjugated
Storage:	Store at -20°C. Avoid freeze / thaw cycles.
Stability:	Shelf life: one year from despatch.
Predicted Protein Size:	55kDa
Gene Name:	cell division cycle 20
Database Link:	<a href="#">Entrez Gene 991 Human Q12834</a>
Background:	CDC20 appears to act as a regulatory protein interacting with several other proteins at multiple points in the cell cycle. It is required for two microtubule-dependent processes, nuclear movement prior to anaphase and chromosome separation.
Synonyms:	bA276H19.3; CDC20A; MGC102824; OTTHUMP00000008572; p55CDC

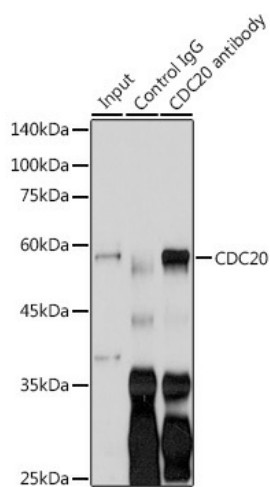


[View online »](#)

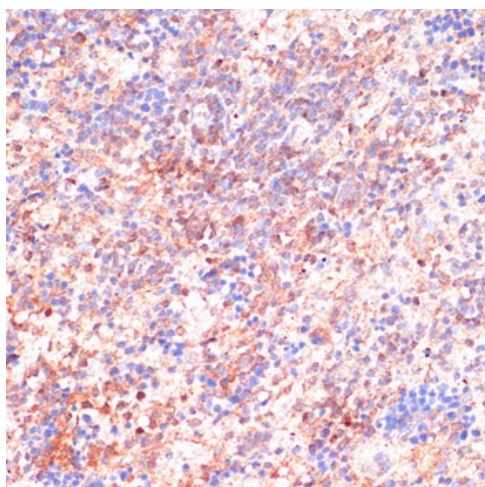
## Product images:



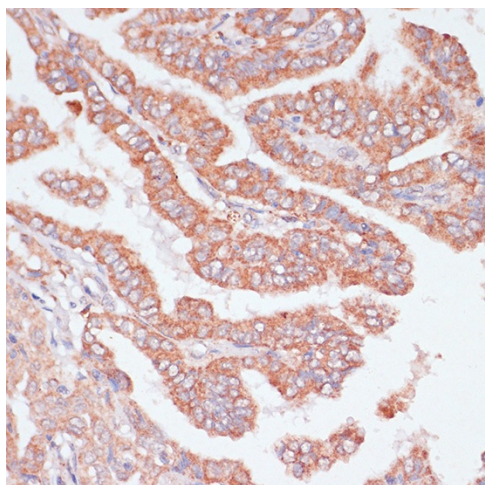
Western blot analysis of lysates from PC-3 cells



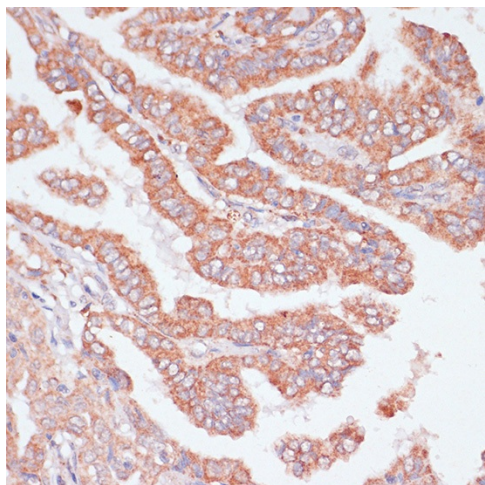
Immunoprecipitation analysis of 200 µg extracts of LO2 cells using 3 µg CDC20 antibody ([TA374498]). Western blot was performed from the immunoprecipitate using CDC20 antibody ([TA374498]) at a dilution of 1:1000.



Immunohistochemistry analysis of paraffin-embedded Rat ovary using CDC20 Rabbit pAb ([TA374498]) at dilution of 1:100 (40x lens). Microwave antigen retrieval performed with 0.01M PBS Buffer (pH 7.2) prior to IHC staining.



Immunohistochemistry analysis of paraffin-embedded Rat spleen using CDC20 Rabbit pAb ([TA374498]) at dilution of 1:100 (40x lens). Microwave antigen retrieval performed with 0.01M PBS Buffer (pH 7.2) prior to IHC staining.



Immunohistochemistry analysis of paraffin-embedded Human thyroid cancer using CDC20 Rabbit pAb ([TA374498]) at dilution of 1:100 (40x lens). Microwave antigen retrieval performed with 0.01M PBS Buffer (pH 7.2) prior to IHC staining.