

Product datasheet for **TA374498**

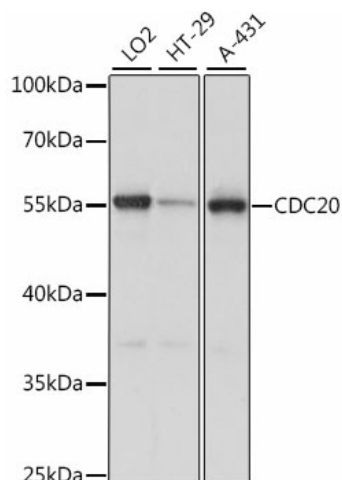
CDC20 Rabbit Polyclonal Antibody

Product data:

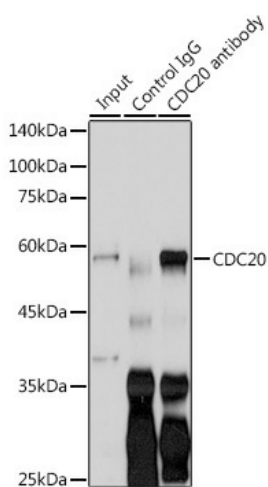
Product Type:	Primary Antibodies
Applications:	ICC/IF, IHC, IP, WB
Recommended Dilution:	WB,1:500 - 1:2000 IHC,1:50 - 1:100 IF,1:50 - 1:100 IP,1:50 - 1:200
Reactivity:	Human, Mouse, Rat
Modifications:	Unmodified
Host:	Rabbit
Isotype:	IgG
Clonality:	Polyclonal
Immunogen:	Recombinant fusion protein containing a sequence corresponding to amino acids 1-270 of human CDC20 (NP_001246.2).
Formulation:	Buffer: PBS with 0.02% sodium azide,50% glycerol,pH7.3.
Concentration:	lot specific
Purification:	Affinity purification
Conjugation:	Unconjugated
Storage:	Store at -20°C. Avoid freeze / thaw cycles.
Stability:	Shelf life: one year from despatch.
Predicted Protein Size:	54kDa
Gene Name:	cell division cycle 20
Database Link:	Entrez Gene 991 Human Q12834
Background:	CDC20 appears to act as a regulatory protein interacting with several other proteins at multiple points in the cell cycle. It is required for two microtubule-dependent processes, nuclear movement prior to anaphase and chromosome separation.
Synonyms:	bA276H19.3; CDC20A; MGC102824; OTTHUMP00000008572; p55CDC



[View online »](#)

Product images:


Western blot analysis of extracts of various cell lines, using CDC20 antibody (TA374498) at 1:1000 dilution. | Secondary antibody: HRP Goat Anti-Rabbit IgG (H+L) at 1:10000 dilution. | Lysates/proteins: 25ug per lane. | Blocking buffer: 3% nonfat dry milk in TBST. | Detection: ECL Basic Kit. | Exposure time: 5s.



Immunoprecipitation analysis of 200ug extracts of LO2 cells using 3ug CDC20 antibody (TA374498). Western blot was performed from the immunoprecipitate using CDC20 antibody (TA374498) at a dilution of 1:1000.