

Product datasheet for **TA374470S**

AIM (CD5L) Rabbit Polyclonal Antibody

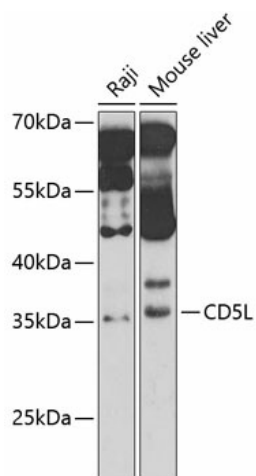
Product data:

Product Type:	Primary Antibodies
Applications:	ELISA, WB
Recommended Dilution:	WB, 1:500 - 1:2000 ELISA, Recommended starting concentration is 1 µg/mL. Please optimize the concentration based on your specific assay requirements.
Reactivity:	Human, Mouse
Modifications:	Unmodified
Host:	Rabbit
Isotype:	IgG
Clonality:	Polyclonal
Formulation:	Buffer: PBS with 0.02% sodium azide, 50% glycerol, pH 7.3.
Concentration:	lot specific
Purification:	Affinity purification
Conjugation:	Unconjugated
Storage:	Store at -20°C. Avoid freeze / thaw cycles.
Stability:	Shelf life: one year from despatch.
Predicted Protein Size:	38kDa
Gene Name:	CD5 molecule like
Database Link:	Entrez Gene 922 Human O43866
Background:	Predicted to enable serine-type endopeptidase activity. Predicted to be involved in zymogen activation. Predicted to act upstream of or within positive regulation of complement-dependent cytotoxicity and regulation of complement activation. Located in cell surface.
Synonyms:	AIM; API6; CT-2; PRO229; SP-ALPHA; Spalpha



[View online »](#)

Product images:



Western blot analysis of various lysates using CD5L Rabbit pAb ([TA374470]) at 1:1000 dilution. Secondary antibody: HRP-conjugated Goat anti-Rabbit IgG (H+L) (AS014) at 1:10000 dilution. Lysates/proteins: 25µg per lane. Blocking buffer: 3% nonfat dry milk in TBST. Detection: ECL Basic Kit (RM00020). Exposure time: 70s.