

Product datasheet for **TA374470**

AIM (CD5L) Rabbit Polyclonal Antibody

Product data:

Product Type:	Primary Antibodies
Applications:	WB
Recommended Dilution:	WB,1:500 - 1:2000
Reactivity:	Human, Mouse
Modifications:	Unmodified
Host:	Rabbit
Isotype:	IgG
Clonality:	Polyclonal
Immunogen:	Recombinant fusion protein containing a sequence corresponding to amino acids 20-347 of human CD5L (NP_005885.1).
Formulation:	Buffer: PBS with 0.02% sodium azide,50% glycerol,pH7.3.
Concentration:	lot specific
Purification:	Affinity purification
Conjugation:	Unconjugated
Storage:	Store at -20°C. Avoid freeze / thaw cycles.
Stability:	Shelf life: one year from despatch.
Predicted Protein Size:	38kDa
Gene Name:	CD5 molecule like
Database Link:	Entrez Gene 922 Human O43866

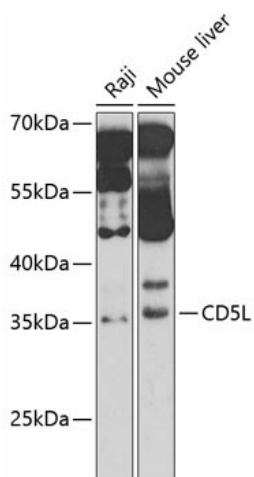
Background: CD5L (CD5 antigen-like), also known as Sp alpha and AIM, is a 50 kDa secreted glycoprotein that belongs to the SRCR (scavenger receptor cysteine rich) group B family of proteins. CD5L is up-regulated in macrophages at inflammatory sites. It sustains inflammatory reactions by both increasing the phagocytic capacity of macrophages and impeding the apoptosis of local macrophages, NK cells, and T cells. CD5L functions as a pattern recognition molecule by binding both lipoteichoic acid (LTA) on Gram positive and lipopolysaccharide (LPS) on Gram negative bacteria. In the thymic cortex, CD5L protects cortical CD4+CD8+thymocytes from apoptosis. CD5L circulates in the serum in complex with IgM.



[View online »](#)

Synonyms: AIM; API6; CT-2; PRO229; SP-ALPHA; Spalpha

Product images:



Western blot analysis of extracts of various cell lines, using CD5L antibody (TA374470) at 1:1000 dilution. Secondary antibody: HRP Goat Anti-Rabbit IgG (H+L) at 1:10000 dilution. Lysates/proteins: 25ug per lane. Blocking buffer: 3% nonfat dry milk in TBST. Detection: ECL Basic Kit. Exposure time: 70s.