

Product datasheet for **TA374466**

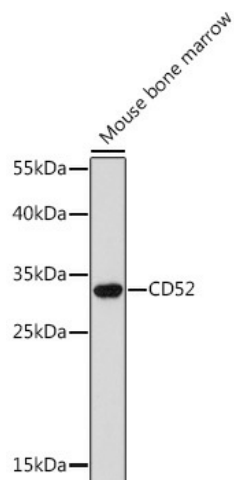
CD52 Rabbit Polyclonal Antibody

Product data:

Product Type:	Primary Antibodies
Applications:	IHC, WB
Recommended Dilution:	WB,1:500 - 1:2000 IHC,1:50 - 1:100 IF,1:50 - 1:100
Reactivity:	Human, Mouse
Host:	Rabbit
Isotype:	IgG
Clonality:	Polyclonal
Immunogen:	A synthetic peptide corresponding to a sequence within amino acids 1-61 of human CD52 (NP_001794.2).
Formulation:	Buffer: PBS with 0.02% sodium azide,50% glycerol,pH7.3.
Concentration:	lot specific
Purification:	Affinity purification
Conjugation:	Unconjugated
Storage:	Store at -20°C. Avoid freeze / thaw cycles.
Stability:	Shelf life: one year from despatch.
Gene Name:	CD52 molecule
Database Link:	Entrez Gene 1043 Human P31358
Background:	CD52 / CDW52 is a small glycosylphosphatidylinositol (GPI) anchored glycoprotein. It has a mature peptide comprising only 12 amino acids and is abundantly expressed on human lymphocytes. From the clinical point of view this protein is an important target for therapeutic interventions aimed at leukocyte depletion in hematological malignancies and post-transplant immunosuppression. CD52 / CDW52 may play a role in carrying and orienting carbohydrate. It is an unusually good target for complement-mediated cell lysis.
Synonyms:	CDw52; HE5



[View online »](#)

Product images:

Western blot analysis of extracts of Mouse bone marrow, using CD52 Rabbit pAb (TA374466) at 1:300 dilution. | Secondary antibody: HRP Goat Anti-Rabbit IgG (H+L) at 1:10000 dilution. | Lysates/proteins: 25ug per lane. | Blocking buffer: 3% nonfat dry milk in TBST. | Detection: ECL Enhanced Kit . | Exposure time: 90s.