

## Product datasheet for **TA374461**

### CD44 Rabbit Polyclonal Antibody

#### Product data:

Product Type:	Primary Antibodies
Applications:	ICC/IF, IHC, WB
Recommended Dilution:	WB,1:500 - 1:2000 IHC,1:50 - 1:200 IF,1:50 - 1:200
Reactivity:	Human, Mouse, Rat
Host:	Rabbit
Isotype:	IgG
Clonality:	Polyclonal
Immunogen:	Recombinant fusion protein containing a sequence corresponding to amino acids 346-385 of human CD44 (NP_000601.3).
Formulation:	Buffer: PBS with 0.02% sodium azide,50% glycerol,pH7.3.
Concentration:	lot specific
Purification:	Affinity purification
Conjugation:	Unconjugated
Storage:	Store at -20°C. Avoid freeze / thaw cycles.
Stability:	Shelf life: one year from despatch.
Predicted Protein Size:	81kDa
Gene Name:	CD44 molecule (Indian blood group)
Database Link:	<a href="#">Entrez Gene 960 Human P16070</a>



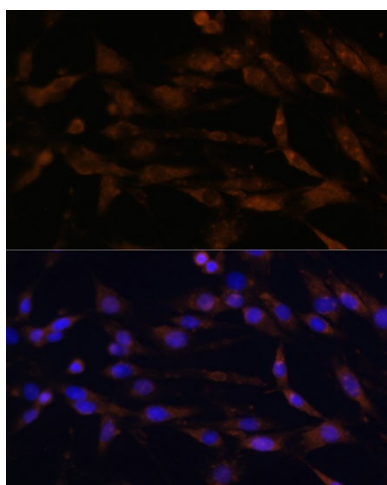
[View online »](#)

**Background:**

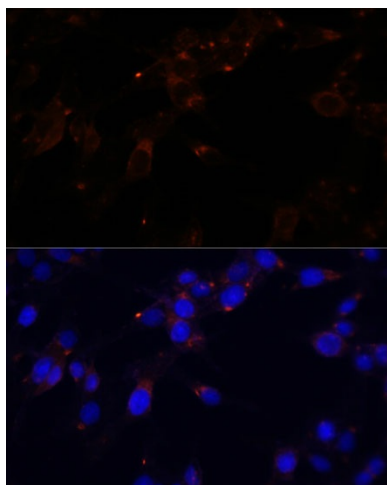
The protein encoded by this gene is a cell-surface glycoprotein involved in cell-cell interactions, cell adhesion and migration. It is a receptor for hyaluronic acid (HA) and can also interact with other ligands, such as osteopontin, collagens, and matrix metalloproteinases (MMPs). This protein participates in a wide variety of cellular functions including lymphocyte activation, recirculation and homing, hematopoiesis, and tumor metastasis. Transcripts for this gene undergo complex alternative splicing that results in many functionally distinct isoforms, however, the full length nature of some of these variants has not been determined. Alternative splicing is the basis for the structural and functional diversity of this protein, and may be related to tumor metastasis.

**Synonyms:**

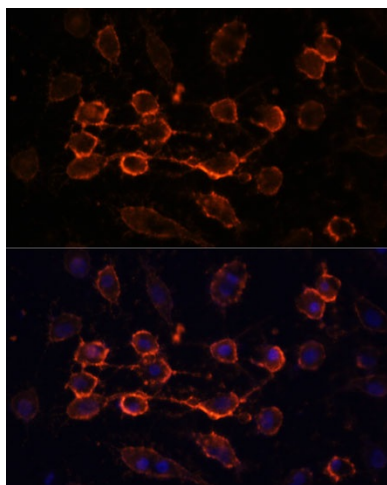
CD44R; CDW44; CSPG8; ECMR-III; Epican; HCELL; HUTCH-I; IN; LHR; MC56; MDU2; MDU3; MGC10468; MIC4; MUTCH-I; PGP-1; PGP-I; Pgp1

**Product images:**

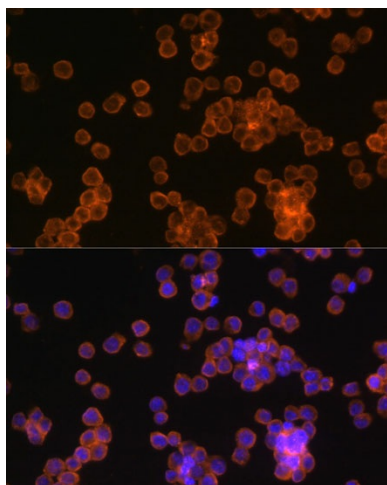
Immunofluorescence analysis of C6 cells using CD44 antibody (TA374461) at dilution of 1:100. Blue: DAPI for nuclear staining.



Immunofluorescence analysis of HeLa cells using CD44 antibody (TA374461) at dilution of 1:100. Blue: DAPI for nuclear staining.



Immunofluorescence analysis of HUVEC cells using CD44 antibody (TA374461) at dilution of 1:100. Blue: DAPI for nuclear staining.



Immunofluorescence analysis of Raw264.7 cells using CD44 antibody (TA374461) at dilution of 1:100. Blue: DAPI for nuclear staining.