

Product datasheet for **TA374460S**

CD44 Rabbit Polyclonal Antibody

Product data:

Product Type:	Primary Antibodies
Applications:	ICC/IF, IHC, WB
Recommended Dilution:	WB,1:500 - 1:2000 IHC,1:50 - 1:200 IF,1:50 - 1:200
Reactivity:	Human, Mouse
Modifications:	Unmodified
Host:	Rabbit
Isotype:	IgG
Clonality:	Polyclonal
Immunogen:	Recombinant fusion protein containing a sequence corresponding to amino acids 148-247 of human CD44 (NP_001189486.1).
Formulation:	Buffer: PBS with 0.02% sodium azide,50% glycerol,pH7.3.
Concentration:	lot specific
Purification:	Affinity purification
Conjugation:	Unconjugated
Storage:	Store at -20°C. Avoid freeze / thaw cycles.
Stability:	Shelf life: one year from despatch.
Predicted Protein Size:	3kDa/15kDa/32-53kDa/73-81kDa
Gene Name:	CD44 molecule (Indian blood group)
Database Link:	Entrez Gene 960 Human P16070



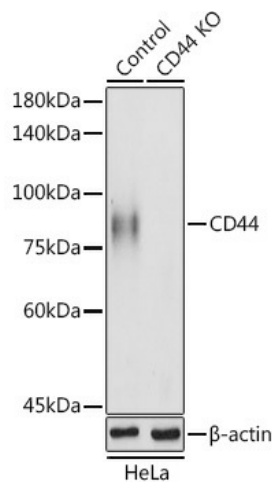
[View online »](#)

Background:

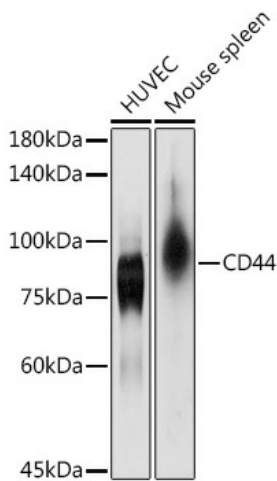
The protein encoded by this gene is a cell-surface glycoprotein involved in cell-cell interactions, cell adhesion and migration. It is a receptor for hyaluronic acid (HA) and can also interact with other ligands, such as osteopontin, collagens, and matrix metalloproteinases (MMPs). This protein participates in a wide variety of cellular functions including lymphocyte activation, recirculation and homing, hematopoiesis, and tumor metastasis. Transcripts for this gene undergo complex alternative splicing that results in many functionally distinct isoforms, however, the full length nature of some of these variants has not been determined. Alternative splicing is the basis for the structural and functional diversity of this protein, and may be related to tumor metastasis.

Synonyms:

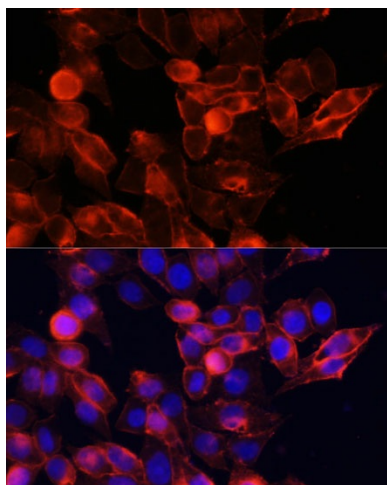
CD44R; CDW44; CSPG8; ECMR-III; Epican; HCELL; HUTCH-I; IN; LHR; MC56; MDU2; MDU3; MGC10468; MIC4; MUTCH-I; PGP-1; PGP-I; Pgp1

Product images:


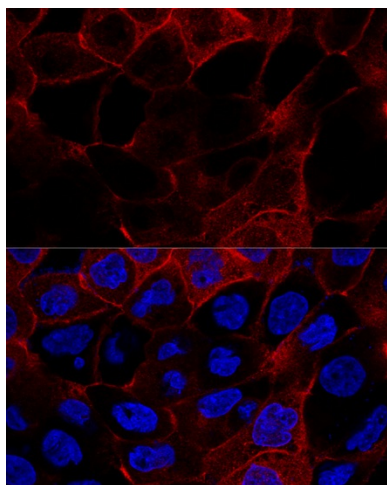
Western blot analysis of extracts of HeLa cells, using CD44 antibody ([TA374460]) at 1:1000 dilution. | Secondary antibody: HRP Goat Anti-Rabbit IgG (H+L) at 1:10000 dilution. | Lysates/proteins: 25ug per lane. | Blocking buffer: 3% nonfat dry milk in TBST. | Detection: ECL Basic Kit . | Exposure time: 10s.



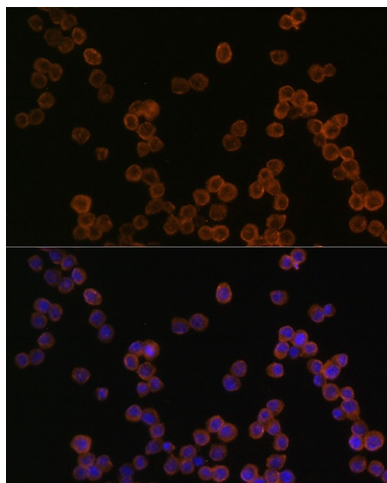
Western blot analysis of extracts of various cell lines, using CD44 antibody ([TA374460]) at 1:1000 dilution. | Secondary antibody: HRP Goat Anti-Rabbit IgG (H+L) at 1:10000 dilution. | Lysates/proteins: 25ug per lane. | Blocking buffer: 3% nonfat dry milk in TBST. | Detection: ECL Basic Kit . | Exposure time: 10s.



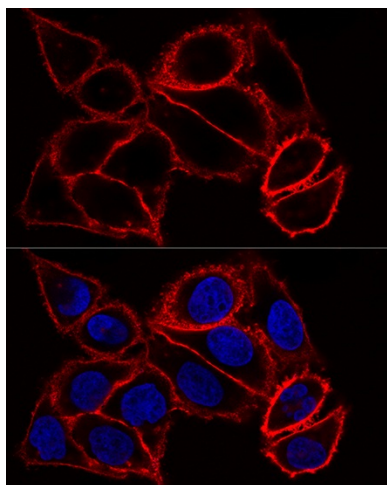
Immunofluorescence analysis of HeLa cells using CD44 antibody ([TA374460]) at dilution of 1:100. Blue: DAPI for nuclear staining.



Confocal immunofluorescence analysis of A431 cells using CD44 antibody ([TA374460]) at dilution of 1:200. Blue: DAPI for nuclear staining.



Immunofluorescence analysis of RAW264.7 cells using CD44 antibody ([TA374460]) at dilution of 1:100. Blue: DAPI for nuclear staining.



Confocal immunofluorescence analysis of HeLa cells using [KO Validated] CD44 Polyclonal Antibody ([TA374460]) at dilution of 1:100. Blue: DAPI for nuclear staining.