

## Product datasheet for **TA374450S**

### CD3E Rabbit Polyclonal Antibody

#### Product data:

|                         |   |
|-------------------------|---|
| Product Type:           | Primary Antibodies  |
| Applications:           | ELISA, ICC/IF, IHC, WB  |
| Recommended Dilution:   | WB, 1:500 - 1:1000<br>IHC-P, 1:50 - 1:200<br>IF/ICC, 1:50 - 1:200<br>ELISA, Recommended starting concentration is 1 µg/mL. Please optimize the concentration based on your specific assay requirements. |
| Reactivity:             | Human, Mouse, Rat   |
| Modifications:          | Unmodified  |
| Host:                   | Rabbit  |
| Isotype:                | IgG   |
| Clonality:              | Polyclonal  |
| Formulation:            | Buffer: PBS with 0.02% sodium azide, 50% glycerol, pH 7.3.  |
| Concentration:          | lot specific  |
| Purification:           | Affinity purification   |
| Conjugation:            | Unconjugated  |
| Storage:                | Store at -20°C. Avoid freeze / thaw cycles.   |
| Stability:              | Shelf life: one year from despatch.   |
| Predicted Protein Size: | 23kDa   |
| Gene Name:              | CD3e molecule   |
| Database Link:          | <a href="#">Entrez Gene 916 Human P07766</a>  |



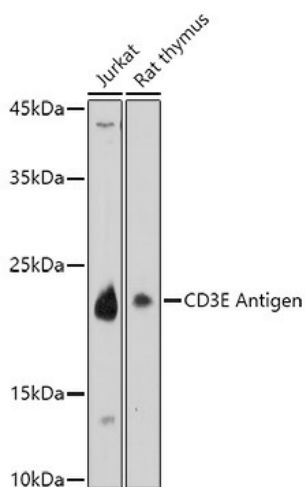
[View online »](#)

**Background:**

The protein encoded by this gene is the CD3-epsilon polypeptide, which together with CD3-gamma, -delta and -zeta, and the T-cell receptor alpha/beta and gamma/delta heterodimers, forms the T-cell receptor-CD3 complex. This complex plays an important role in coupling antigen recognition to several intracellular signal-transduction pathways. The genes encoding the epsilon, gamma and delta polypeptides are located in the same cluster on chromosome 11. The epsilon polypeptide plays an essential role in T-cell development. Defects in this gene cause immunodeficiency. This gene has also been linked to a susceptibility to type I diabetes in women.

**Synonyms:**

CD3-epsilon; FLJ18683; T3E; TCRE

**Product images:**


Western blot analysis of various lysates using CD3E Antigen Rabbit pAb ([TA374450]) at 1:1000 dilution.

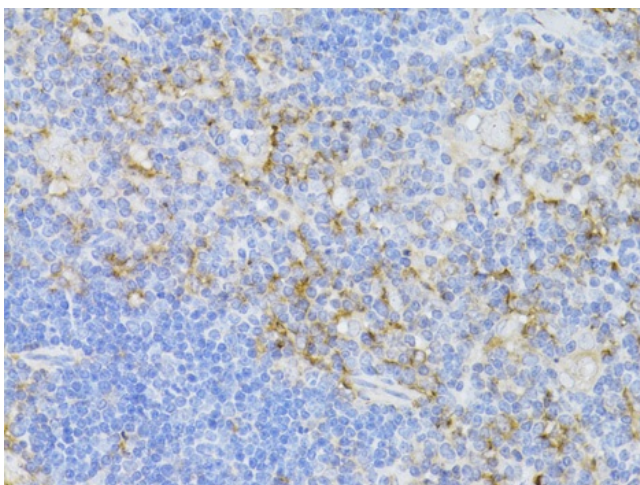
Secondary antibody: HRP-conjugated Goat anti-Rabbit IgG (H+L) (AS014) at 1:10000 dilution.

Lysates/proteins: 25µg per lane.

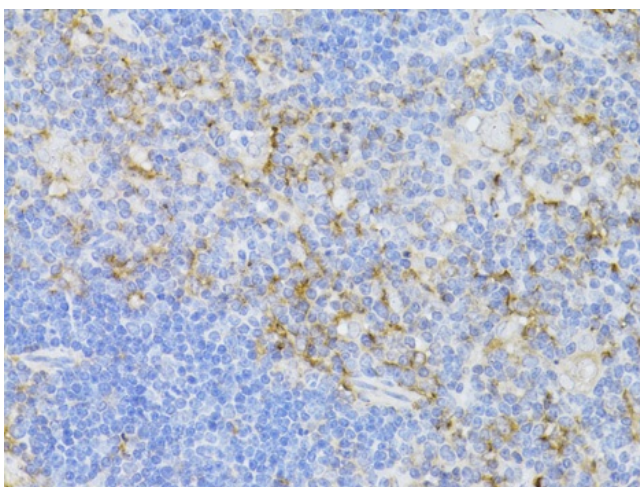
Blocking buffer: 3% nonfat dry milk in TBST.

Detection: ECL Basic Kit (RM00020).

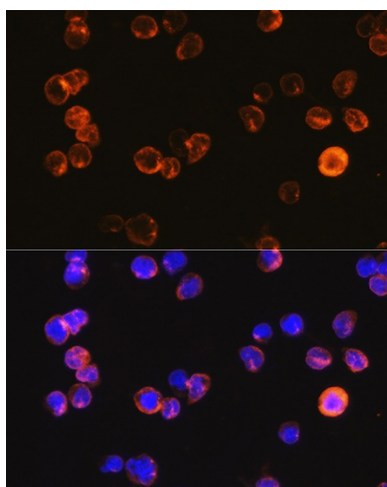
Exposure time: 90s.



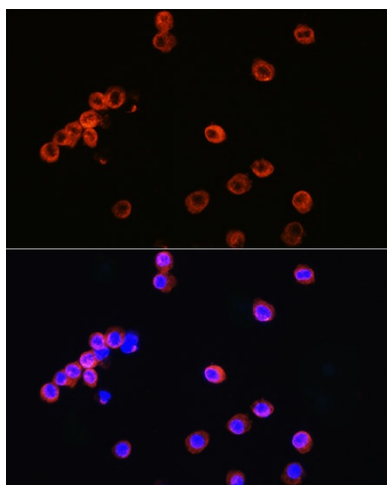
Immunohistochemistry analysis of paraffin-embedded Mouse spleen using CD3E Antigen Rabbit pAb ([TA374450]) at dilution of 1:100 (40x lens). Microwave antigen retrieval performed with 0.01M PBS Buffer (pH 7.2) prior to IHC staining.



Immunohistochemistry analysis of paraffin-embedded Mouse thymus using CD3E Antigen Rabbit pAb ([TA374450]) at dilution of 1:100 (40x lens). Microwave antigen retrieval performed with 0.01M PBS Buffer (pH 7.2) prior to IHC staining.



Immunofluorescence analysis of Jurkat cells using CD3E Antigen Rabbit pAb ([TA374450]) at dilution of 1:100. Blue: DAPI for nuclear staining.



Immunofluorescence analysis of RAW264.7 cells using CD3E Antigen Rabbit pAb ([TA374450]) at dilution of 1:100. Blue: DAPI for nuclear staining.