

## Product datasheet for **TA374445**

### CD36 Rabbit Polyclonal Antibody

#### Product data:

Product Type:	Primary Antibodies
Applications:	ICC/IF, WB
Recommended Dilution:	WB,1:500 - 1:2000 IF,1:50 - 1:200
Reactivity:	Human, Mouse, Rat
Modifications:	Unmodified
Host:	Rabbit
Isotype:	IgG
Clonality:	Polyclonal
Immunogen:	Recombinant fusion protein containing a sequence corresponding to amino acids 301-400 of human CD36/SR-B3 (NP_001120916.1).
Formulation:	Buffer: PBS with 0.02% sodium azide,50% glycerol,pH7.3.
Concentration:	lot specific
Purification:	Affinity purification
Conjugation:	Unconjugated
Storage:	Store at -20°C. Avoid freeze / thaw cycles.
Stability:	Shelf life: one year from despatch.
Predicted Protein Size:	32kDa/46kDa/48kDa/53kDa
Gene Name:	CD36 molecule
Database Link:	<a href="#">Entrez Gene 948 Human P16671</a>



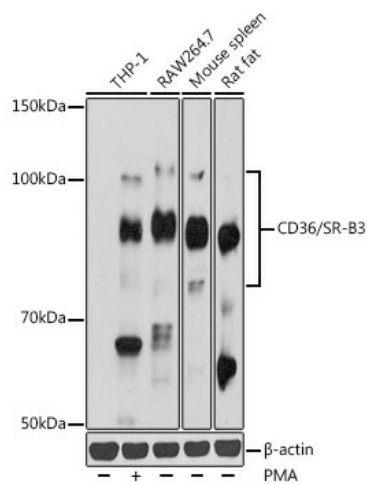
[View online »](#)

**Background:**

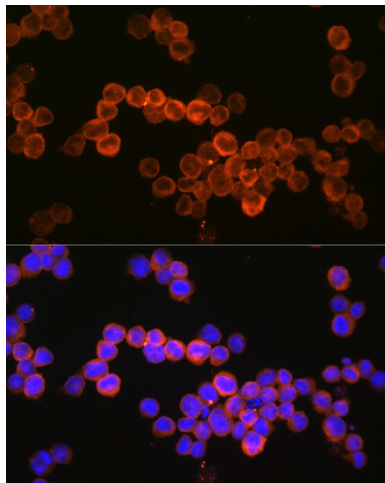
The protein encoded by this gene is the fourth major glycoprotein of the platelet surface and serves as a receptor for thrombospondin in platelets and various cell lines. Since thrombospondins are widely distributed proteins involved in a variety of adhesive processes, this protein may have important functions as a cell adhesion molecule. It binds to collagen, thrombospondin, anionic phospholipids and oxidized LDL. It directly mediates cytoadherence of *Plasmodium falciparum* parasitized erythrocytes and it binds long chain fatty acids and may function in the transport and/or as a regulator of fatty acid transport. Mutations in this gene cause platelet glycoprotein deficiency. Multiple alternatively spliced transcript variants have been found for this gene.

**Synonyms:**

CHDS7; FAT; GP3B; GP4; GPIIB; GPIV; OTTHUMP00000207872; OTTHUMP00000207874; PAS-4; PASIV; SCARB3

**Product images:**


Western blot analysis of extracts of various cell lines, using CD36/SR-B3 antibody (TA374445) at 1:1000 dilution. THP-1 cells were treated by PMA (80 nM) at 37°C for overnight. | Secondary antibody: HRP Goat Anti-Rabbit IgG (H+L) at 1:10000 dilution. | Lysates/proteins: 25ug per lane. | Blocking buffer: 3% nonfat dry milk in TBST. | Detection: ECL Basic Kit. | Exposure time: 180s.



Immunofluorescence analysis of U937 cells using CD36/SR-B3 Rabbit pAb (TA374445) at dilution of 1:150 (40x lens). Blue: DAPI for nuclear staining.