

Product datasheet for **TA374427S**

TEM1 (CD248) Rabbit Polyclonal Antibody

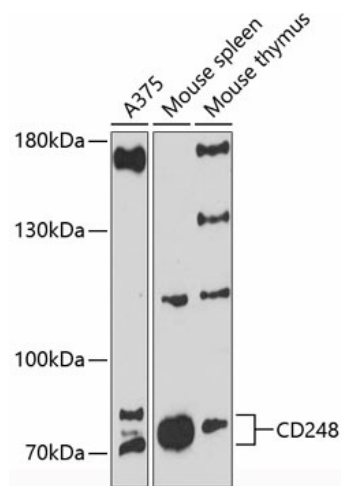
Product data:

Product Type:	Primary Antibodies
Applications:	ELISA, WB
Recommended Dilution:	WB, 1:1000 - 1:5000 ELISA, Recommended starting concentration is 1 µg/mL. Please optimize the concentration based on your specific assay requirements.
Reactivity:	Human, Mouse, Rat
Modifications:	Unmodified
Host:	Rabbit
Isotype:	IgG
Clonality:	Polyclonal
Formulation:	Buffer: PBS with 0.02% sodium azide, 50% glycerol, pH 7.3.
Concentration:	lot specific
Purification:	Affinity purification
Conjugation:	Unconjugated
Storage:	Store at -20°C. Avoid freeze / thaw cycles.
Stability:	Shelf life: one year from despatch.
Predicted Protein Size:	81kDa
Gene Name:	CD248 molecule
Database Link:	Entrez Gene 57124 Human Q9HCU0
Background:	Predicted to enable extracellular matrix binding activity and extracellular matrix protein binding activity. Predicted to be involved in cell migration. Predicted to act upstream of or within several processes, including anatomical structure regression; lymph node development; and positive regulation of endothelial cell apoptotic process. Located in extracellular exosome.
Synonyms:	2610111G01Rik; CD164L1; endosialin; MGC119478; MGC119479; TEM1



[View online »](#)

Product images:



Western blot analysis of various lysates using CD248 Rabbit pAb ([TA374427]) at 1:3000 dilution.

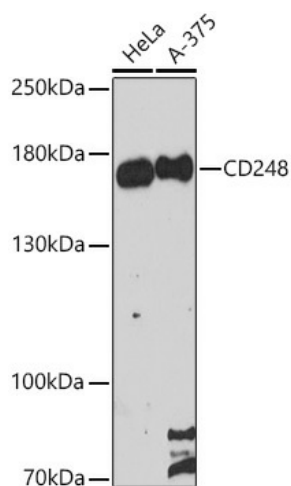
Secondary antibody: HRP-conjugated Goat anti-Rabbit IgG (H+L) (AS014) at 1:10000 dilution.

Lysates/proteins: 25µg per lane.

Blocking buffer: 3% nonfat dry milk in TBST.

Detection: ECL Enhanced Kit (RM00021).

Exposure time: 90s.



Western blot analysis of various lysates using CD248 Rabbit pAb ([TA374427]) at 1:3000 dilution.

Secondary antibody: HRP-conjugated Goat anti-Rabbit IgG (H+L) (AS014) at 1:10000 dilution.

Lysates/proteins: 25µg per lane.

Blocking buffer: 3% nonfat dry milk in TBST.

Detection: ECL Enhanced Kit (RM00021).

Exposure time: 90s.