

## Product datasheet for **TA374427**

### TEM1 (CD248) Rabbit Polyclonal Antibody

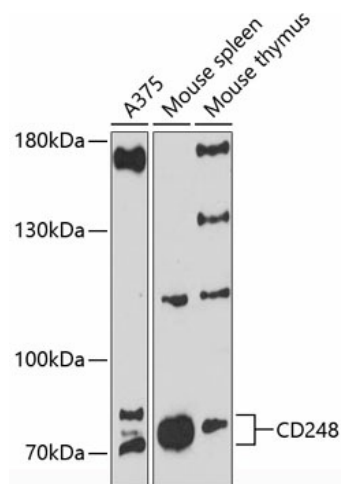
#### Product data:

Product Type:	Primary Antibodies
Applications:	WB
Recommended Dilution:	WB,1:500 - 1:2000
Reactivity:	Human, Mouse, Rat
Modifications:	Unmodified
Host:	Rabbit
Isotype:	IgG
Clonality:	Polyclonal
Immunogen:	Recombinant fusion protein containing a sequence corresponding to amino acids 18-150 of human CD248 (NP_065137.1).
Formulation:	Buffer: PBS with 0.02% sodium azide,50% glycerol,pH7.3.
Concentration:	lot specific
Purification:	Affinity purification
Conjugation:	Unconjugated
Storage:	Store at -20°C. Avoid freeze / thaw cycles.
Stability:	Shelf life: one year from despatch.
Predicted Protein Size:	46kDa/80kDa
Gene Name:	CD248 molecule
Database Link:	<a href="#">Entrez Gene 57124 Human Q9HCU0</a>
Background:	May play a role in tumor angiogenesis.
Synonyms:	2610111G01Rik; CD164L1; endosialin; MGC119478; MGC119479; TEM1



[View online »](#)

## Product images:



Western blot analysis of extracts of various cell lines, using CD248 antibody (TA374427) at 1:3000 dilution. | Secondary antibody: HRP Goat Anti-Rabbit IgG (H+L) at 1:10000 dilution. | Lysates/proteins: 25ug per lane. | Blocking buffer: 3% nonfat dry milk in TBST. | Detection: ECL Enhanced Kit. | Exposure time: 90s.