

## Product datasheet for **TA374408**

### CCT6B Rabbit Polyclonal Antibody

#### Product data:

Product Type:	Primary Antibodies
Applications:	ICC/IF, WB
Recommended Dilution:	WB,1:500 - 1:2000 IF,1:50 - 1:200
Reactivity:	Human, Mouse, Rat
Modifications:	Unmodified
Host:	Rabbit
Isotype:	IgG
Clonality:	Polyclonal
Immunogen:	Recombinant fusion protein containing a sequence corresponding to amino acids 120-340 of human CCT6B (NP_006575.2).
Formulation:	Buffer: PBS with 0.02% sodium azide,50% glycerol,pH7.3.
Concentration:	lot specific
Purification:	Affinity purification
Conjugation:	Unconjugated
Storage:	Store at -20°C. Avoid freeze / thaw cycles.
Stability:	Shelf life: one year from despatch.
Predicted Protein Size:	53kDa/57kDa
Gene Name:	chaperonin containing TCP1 subunit 6B
Database Link:	<a href="#">Entrez Gene 10693 Human Q92526</a>

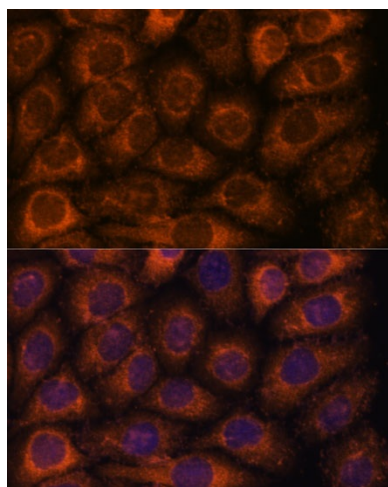
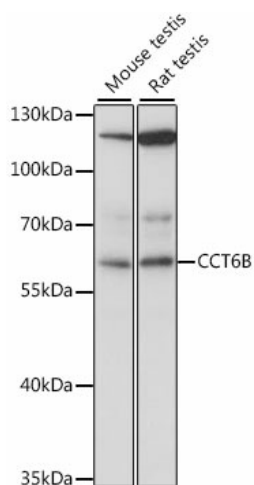
**Background:** This gene encodes a molecular chaperone that is a member of the chaperonin-containing TCP1 complex (CCT), also known as the TCP1 ring complex (TRiC). This complex consists of two identical stacked rings, each containing eight different proteins. Unfolded polypeptides enter the central cavity of the complex and are folded in an ATP-dependent manner. The complex folds various proteins, including actin and tubulin. Alternative splicing results in multiple transcript variants.

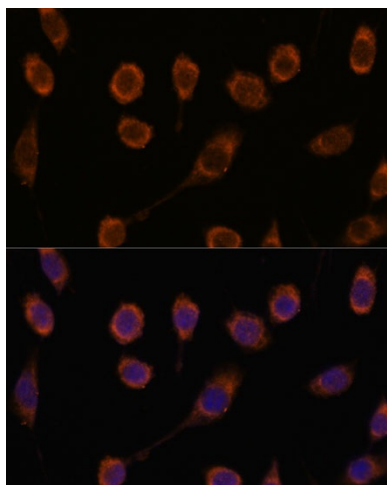


[View online »](#)

Synonyms: CCT-zeta-2; CCT-zeta-like; CCTZ-2; Cctz2; TCP-1-zeta-2; TCP-1-zeta-like; TSA303

### Product images:





Immunofluorescence analysis of L929 cells using CCT6B antibody (TA374408) at dilution of 1:100. Blue: DAPI for nuclear staining.