

## Product datasheet for **TA374403S**

### TCP1 beta (CCT2) Rabbit Polyclonal Antibody

#### Product data:

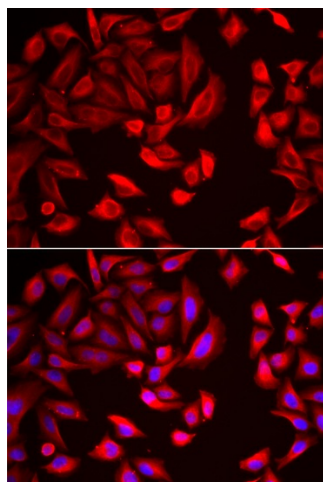
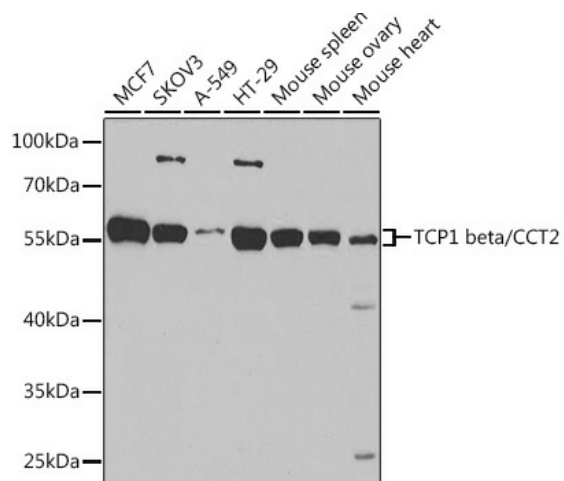
Product Type:	Primary Antibodies
Applications:	ELISA, ICC/IF, IP, WB
Recommended Dilution:	WB, 1:500 - 1:2000 IF/ICC, 1:50 - 1:200 IP, 0.5µg-4µg antibody for 200µg-400µg extracts of whole cells ELISA, Recommended starting concentration is 1 µg/mL. Please optimize the concentration based on your specific assay requirements.
Reactivity:	Human, Mouse
Modifications:	Unmodified
Host:	Rabbit
Isotype:	IgG
Clonality:	Polyclonal
Formulation:	Buffer: PBS with 0.02% sodium azide, 50% glycerol, pH7.3.
Concentration:	lot specific
Purification:	Affinity purification
Conjugation:	Unconjugated
Storage:	Store at -20°C. Avoid freeze / thaw cycles.
Stability:	Shelf life: one year from despatch.
Predicted Protein Size:	57kDa
Gene Name:	chaperonin containing TCP1 subunit 2
Database Link:	<a href="#">Entrez Gene 10576 Human P78371</a>
Background:	The protein encoded by this gene is a molecular chaperone that is a member of the chaperonin containing TCP1 complex (CCT), also known as the TCP1 ring complex (TRiC). This complex consists of two identical stacked rings, each containing eight different proteins. Unfolded polypeptides enter the central cavity of the complex and are folded in an ATP-dependent manner. The complex folds various proteins, including actin and tubulin. Two transcript variants encoding different isoforms have been found for this gene.

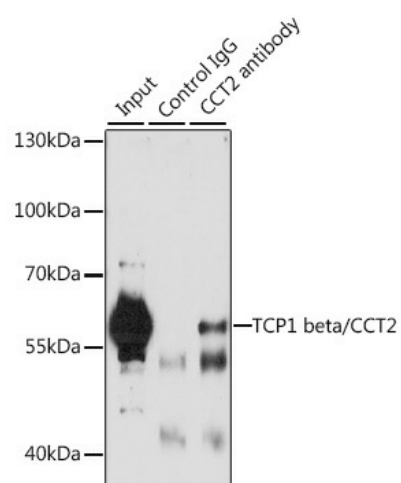


[View online »](#)

**Synonyms:** 99D8.1; CCT-beta; CCTB; MGC142074; MGC142076; PRO1633; TCP-1-beta

## Product images:





Immunoprecipitation analysis of 200 µg extracts of A-549 cells